

St. Johns Wood Park, St. Johns Wood London, NW8

We offer this 2nd floor property in this sought after purpose built block. The property comprises three double bedrooms, two en suite bathrooms, additional shower room, reception room and black granite kitchen with American fridge / freezer. The property benefits from new double glazed windows, 24 hour porter and has been refurbished in a contemporary design.



£1,350 Per Week

303 West End Lane • West Hampstead • London NW6 1RD
103 Chamberlayne Road • Kensal Rise • London NW10 3NS

T: 020 7431 3777 **F:** 020 7431 9777 **E:** info@abacusestates.com **W:** www.abacusestates.com

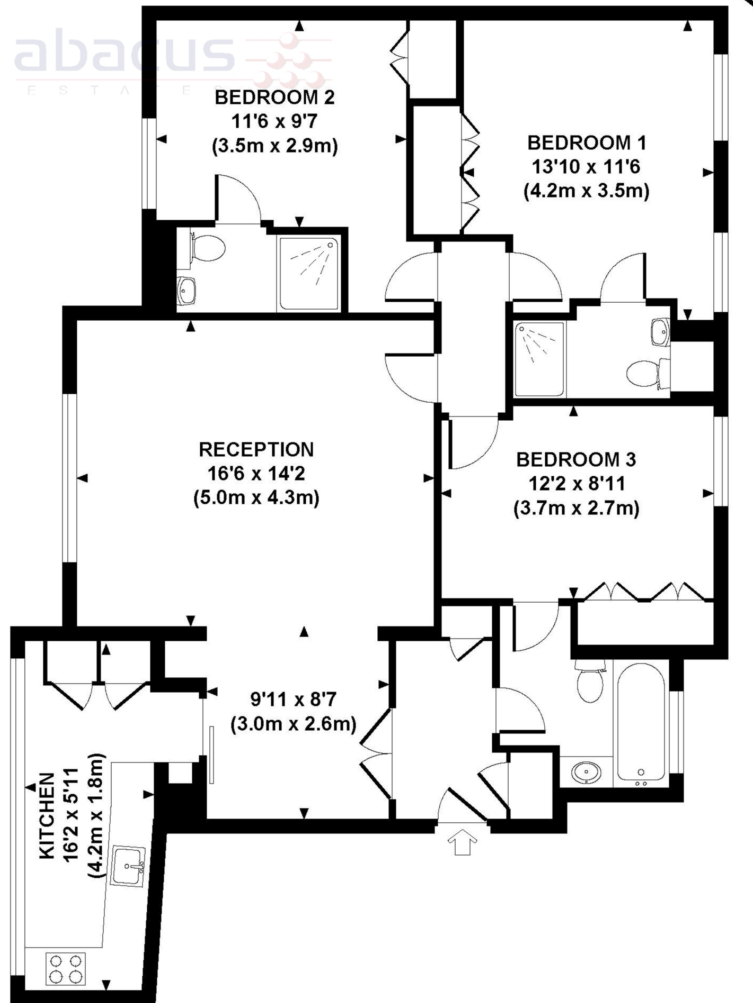


Energy Efficiency Rating		Current	Potential
<i>Very energy efficient - lower running costs</i>			
(92-100) A		✘	✘
(81-91) B			
(69-80) C			
(55-68) D			
(39-54) E			
(21-38) F			
(1-20) G			
<i>Not energy efficient - higher running costs</i>			
England & Wales		EU Directive 2002/91/EC	

Environmental Impact (CO ₂) Rating		Current	Potential
<i>Very environmentally friendly - lower CO₂ emissions</i>			
(92-100) A		✘	✘
(81-91) B			
(69-80) C			
(55-68) D			
(39-54) E			
(21-38) F			
(1-20) G			
<i>Not environmentally friendly - higher CO₂ emissions</i>			
England & Wales		EU Directive 2002/91/EC	

FLAT 65 BOYDELL COURT

THIRD FLOOR



APPROXIMATE GROSS INTERNAL AREA 1062 SQ FT / 99 SQ M

Although every attempt has been made to ensure accuracy, all measurements are approximate.
The floor plan's for illustrative purposes only and not to scale. Measured in accordance to RICS standards.
DE-PHOTOGRAPHY.NET

VIEWING BY APPOINTMENT WITH AGENTS

Abacus Estates
OPEN MON-FRI 8.00AM TO 7.00PM
SAT - 9.30AM TO 4.00PM
SUN - BY PRIOR APPOINTMENT

Important Notice

1. These particulars have been prepared in all good faith to give a fair overall view of the property. If any points are particularly relevant to your interest in the property please ask for further information/ verification.
2. The photograph depicts only certain parts of the property. The fittings illustrated may be included with the apartment/ house although the joinery and paint finishes may differ. No assumptions should be made with regards to parts of the property. Please ask for further information if required.
3. Any areas, measurements or distances referred to are given as a guide only and are not precise. If such details are fundamental to a purchase, purchasers must rely on their own enquires.
4. Descriptions of the property are subjective and are used in good faith as an opinion and a statement of fact. Please make further specific enquires to ensure that our descriptions are likely to match any expectations you may have of the property.

N.B. Abacus Estates is a Trading name for and on behalf of Abacus Estates International Limited.