



Estate Agency, Letting Agency & Property Maintenance

LARN Number 1906034

T: 01563 531122 E: kilmarnock@glowhomeslettingandsales.com

37 John Finnie Street, Kilmarnock, KA1 1BL

47-49 Vernon Street, Saltcoats, KA21 5HE



WWW.GLOWHOMESLETTINGANDSALES.COM

Offers Over £79,995 Dundonald Crescent, Auchengate, KA11



- Semi detached villa
- Handy outhouse storage
- Council Tax band A
- Two double bedrooms
- Private garden
- Spacious lounge with patio doors
- Easy links to main travel routes

Glow Homes are delighted to present 21 Dundonald Crescent in Auchengate, Irvine to the market for sale.

The property is located within the Auchengate development in Irvine. This is a quiet development within easy travelling distance of Irvine, Troon and Kilmarnock. The quick access to the A78 makes it popular for commuters working out with the immediate area.

The semi-detached villa provides generously sized accommodation over two levels with gardens to the front and rear. There is ample parking at the property and within the development.

On entering the villa, the entrance hallway provides access to the lounge, kitchen and stairs to the first floor. The spacious lounge is flooded with natural light with the large window to the front and patio doors to the rear overlooking the back garden. There is currently a feature fireplace and a serving hatch to the kitchen!

The kitchen comprises of floor and wall mounted units in a beech wood finish with a complimentary worktop. The kitchen has a large built in storage cupboard and an access door to a link detached outhouse area. There are two large storage areas within this covered space with fully locking doors to access it from the front and back garden as well.

On the first floor there are two double bedrooms both of which benefit from having built in storage cupboards. The family bathroom is on the first floor and comprises of a bath with overhead shower, wc and wash hand basin.

There is a lawn garden to the front of the property and an access door for the main house and also the outhouse area. The garden to the rear has a lawn and a large decked area immediately outside the lounge which provides the perfect spot for outdoor dining and socialising.

The Auchengate development has built a small, friendly community over the years providing a quiet residence that is within easy links to the surrounding towns.

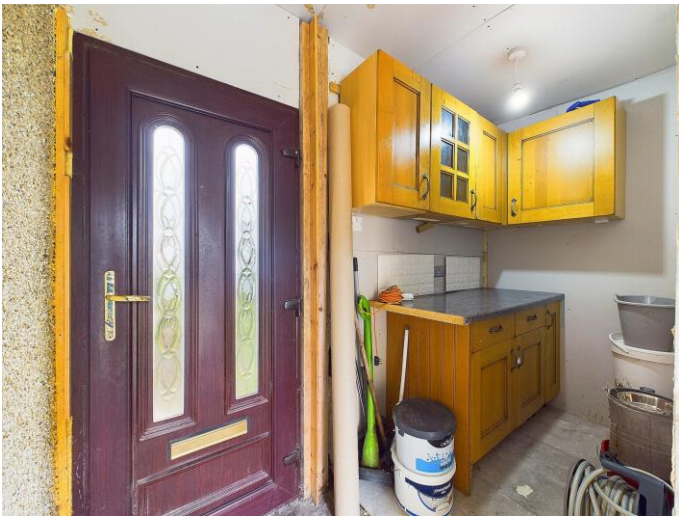
Council Tax band A

Home Report available

Dundonald Crescent, Auchengate, KA11

-
-
-







Directions

Location



VIEWING BY APPOINTMENT WITH AGENTS GLOW HOMES AYRSHIRE

37 John Finnie St, Kilmarnock, KA1 1BL T: 01563 531122 E: kilmarnock@glowhomeslettingandsales.com W: <http://www.glowhomeslettingandsales.com/>

General: While we endeavour to make our sales particulars fair, accurate and reliable, they are only a general guide to the property and, accordingly, if there is any point which is of particular importance to you, please contact the office and we will be pleased to check the position for you, especially if you are contemplating travelling some distance to view the property.

Measurements: These approximate room sizes are only intended as general guidance. You must verify the dimensions carefully before ordering carpets or any built-in furniture.

Services: Please note we have not tested the services or any of the equipment or appliances in this property, accordingly we strongly advise prospective buyers to commission their own survey or service reports before finalizing their offer to purchase.

THESE PARTICULARS ARE ISSUED IN GOOD FAITH BUT DO NOT CONSTITUTE REPRESENTATIONS OF FACT OR FORM PART OF ANY OFFER OR CONTRACT. THE MATTERS REFERRED TO IN THESE PARTICULARS SHOULD BE INDEPENDENTLY VERIFIED BY PROSPECTIVE BUYERS OR TENANTS. NEITHER GLOW HOMES AYRSHIRE NOR ANY OF ITS EMPLOYEES OR AGENTS HAS ANY AUTHORITY TO MAKE OR GIVE ANY REPRESENTATION OR WARRANTY WHATEVER IN RELATION TO THIS PROPERTY.

YOUR HOME IS AT RISK IF YOU DO NOT KEEP UP REPAYMENTS ON A MORTGAGE OR OTHER LOAN SECURED ON IT.

Written quotations available on request. All loans secured on property. Life assurance is usually required.