



TO LET

**Wexford Road,
Wandsworth Common**

£2,600 pcm

**Spacious 2 Bedroom Ground
Floor Flat Unfurnished**





Description

Hindwoods are delighted to present to the market a well-presented self-contained ground floor flat. Local to all amenities and Wandsworth common station on the next road.

The accommodation comprises:

Entrance Hall

Radiator. Original tiled floor. Entryphone. Radiator. Door to cellar and side entrance.

Bedroom 1

18' x 12'9" Large single glazed window. Radiator. New fitted carpet.

Bedroom 2

13'6" x 9'3" Large single glazed window. Radiator. New fitted carpet.

Lounge

20'3" x 11'3" Two radiators. Feature fire surround. New fitted carpet. French doors to:

Conservatory

12'9" x 5'6" Radiator. Original tiled floor. Glazed door to rear garden.

Dining Room

12'3" x 11'6" Radiator. Fireplace recess. Built-in high level cupboard.

Kitchen

10'3" x 8'9" Range of wall and base units with stainless steel sink unit and worktop surfaces. Built in electric oven, gas hob and cooker hood. Large single glazed window. Radiator. Tiled floor.

Bathroom

Enclosed bath with mixer tap, shower attachment. Vanity hand basin. W.C. Heated towel rail. Fully tiled walls. Tiled floor and single glazed frosted window.

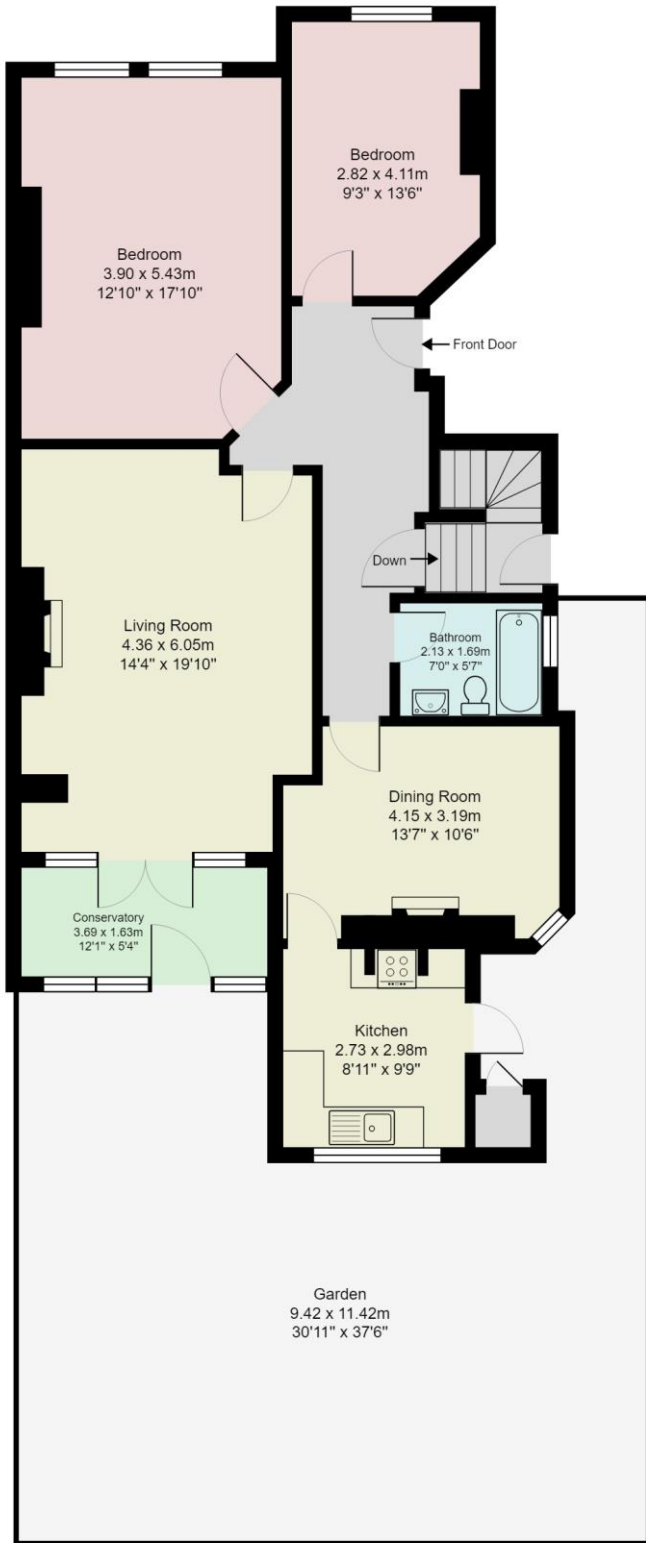
Cellar/Utility Area

Two radiators. Washing machine. Deep white sink. Worktop surface. Built in cupboards.

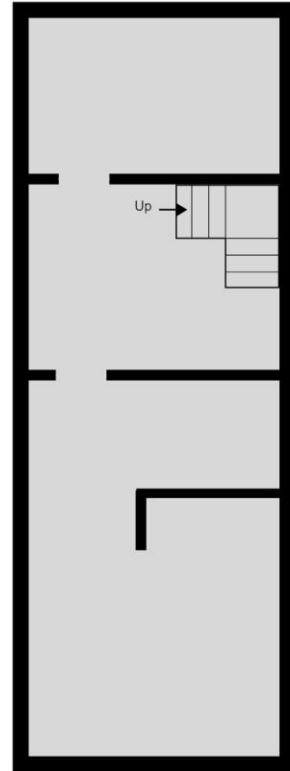


Own rear garden 38' x 30' (11.4m x 9.5m)





Ground Floor



Basement