



For Sale

**Morden Hill
Lewisham
London
SE13 7NP**

£600,000

3 Bedroom Semi-Detached
House





Description

Hindwoods are delighted to bring to market this three-bedroom semi-detached house. Situated in the desirable area of Morden Hill, Lewisham. This semi-detached house offers large spacious bedrooms and a mature garden. The ground floor features a living room adjacent to a separate dining room. At the rear of property, the compact kitchen leads out to the garden. Upstairs, the property offers two good-sized double bedrooms, offering plenty of space for bedroom furnishings. Additionally, there is a single bedroom offering a versatile space that can serve as a child's room, guest room, or home office.

It is minutes away from Lewisham Train Station and the DLR Line, making it ideal for those who commute to London regularly.

Local Amenities

Morden Hill is conveniently situated close to a variety of local amenities, including shops, schools, and parks, ensuring that all your everyday needs are met. Additionally, excellent transport links nearby provide easy access to Central London and surrounding areas.

Accommodation

The accommodation comprises:

Living Room

10'7" x 12'2" (3.22m x 3.70m) Bay windows at the front. 1 large Radiator. Carpeted throughout.

Dining Room

10'2" x 11'11" (3.11m x 3.64m) Casement window at the rear of the property. Carpeted throughout.

Kitchen

5'11" x 9'2" (1.80m x 2.25m) Sliding Window. The door leading to the rear of the property. Fitted cupboards with vinyl flooring throughout.

Bathroom

5'10" x 7,5" (1.79m x 2.25m) Suite comprising pedestal wash basin and W.C with tiled walls. Bath with shower hose attachment. Vinyl flooring.

Bedroom 1

10'3" x 12'2" (3.11m x 3.70m) Bay windows at the front. 1 Small Radiator. Carpeted throughout.

Bedroom 2

10'3" x 11'11" (3.11m x 3.64m) Sliding windows at the rear. 1 Small Radiator. Carpeted throughout.

Bedroom 3

5'10" x 8', (1.79m x 2.47m) Sliding windows at front. 1 Small Radiator. Carpeted throughout.





Score	Energy rating	Current	Potential
92+	A		
81-91	B		83 B
69-80	C		
55-68	D	62 D	
39-54	E		
21-38	F		
1-20	G		

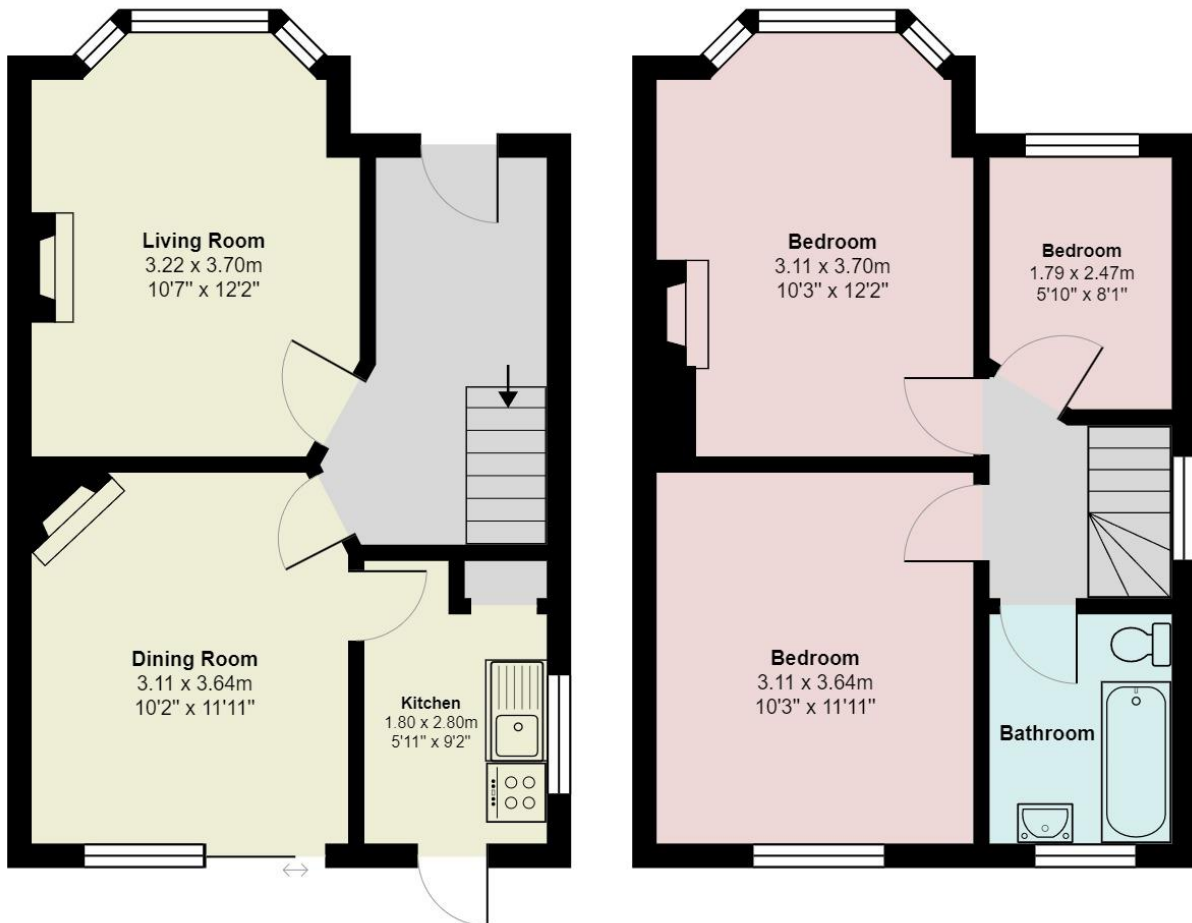
Viewings

For further information
 please contact:
 Hindwoods 0208 858 9303
 Louis Manzi
L.Manzi@hindwoods.co.uk

HINDWOODS
 hindwoods.co.uk
020 8858 9303



MORDEN HILL



Total Area: 74.3 m² ... 800 ft²

All measurements are approximate and for display purposes only