



To Let

Croydon Road
Beckenham
Kent
BR3 4DF

£1850.00

3 Bedroom Flat Unfurnished





Description

Hindwoods are delighted to bring to market this spacious newly refurbished three-bedroom split level maisonette located above commercial premises.

The flat entrance is to the rear of the property which hosts a spacious garden that has been recently landscaped. In addition, there is also access to the rear car park off the main road.

The kitchen has been refurbished to a high specification and boasts a fitted oven, hob, and cooker hood with an attractive olive sage green finish to the units. A compliment to the kitchen with a contrast of white subway tiles and complete with washing machine, tumble dryer and a fridge-freezer.

The three-bedroom property has recently had new double-glazed windows throughout, newly fitted carpets in all rooms and to the staircase. Benefitting from Gas Central Heating.



Local Amenities

Situated on Croydon Road between Wimborne Way and Clock House Road.

Within half a mile of Elmers End mainline station and tram stop. Birkbeck mainline station is located within a mile of the property.

The area offers an abundance of local nurseries, preschools, primary and high schools within proximity.

The area is within walking distance to local shops, bars and restaurants.

Accommodation

The accommodation comprises:

Living Room

10'1 X 13'2 (3.08 X 4.02m)

Newly decorated light airy living room with fully fitted newly laid carpet. Benefitting from double glazed windows, mantel piece and wall mounted radiator.

Dining Room

10'1 X 12'7 (3.08 X 3.85m)

Newly decorated spacious dining room with fully fitted newly laid carpet.





Kitchen

6'3 X 8'9 (1.91 X 2.68m)

The kitchen has recently been refurbished to a high specification. Benefitting from all new appliances which include a fitted oven, hob, cooker hood, washing machine, tumble dryer and a fridge-freezer. The kitchen units are in an attractive olive sage green finish.

Bathroom

6'1 X 8'7 (1.85 X 2.63m)

Newly tiled and fitted bathroom with a high-rise shower, wash hand basin, toilet, and wall mounted radiator.



Bedroom 1

16'8 X 13'2 (5.07 X 4.02m)

Newly decorated bedroom with fully fitted newly laid carpet, double glazed windows and wall mounted radiator.

Bedroom 2

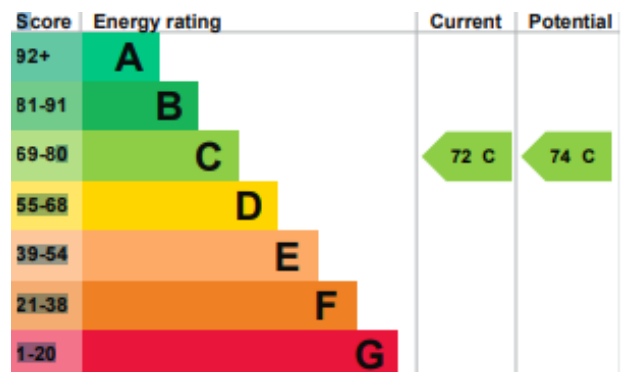
10'0 X 12'7 (3.06 X 3.85 m)

Newly decorated double bedroom with fully fitted newly laid carpet, double glazed windows and wall mounted radiator

Bedroom 3/Study

6,3 X 7'10 (1.91 X 2.40 m)

Newly decorated double bedroom with fully fitted newly laid carpet, double glazed windows and wall mounted radiator



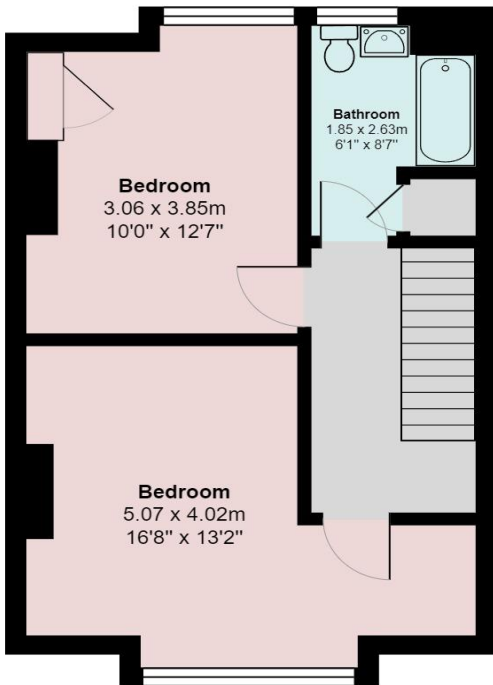
Viewings

Sharon Richards
 For further information
 Please contact:
 Hindwoods 0208 858 9303
S.richards@hindwoods.co.uk

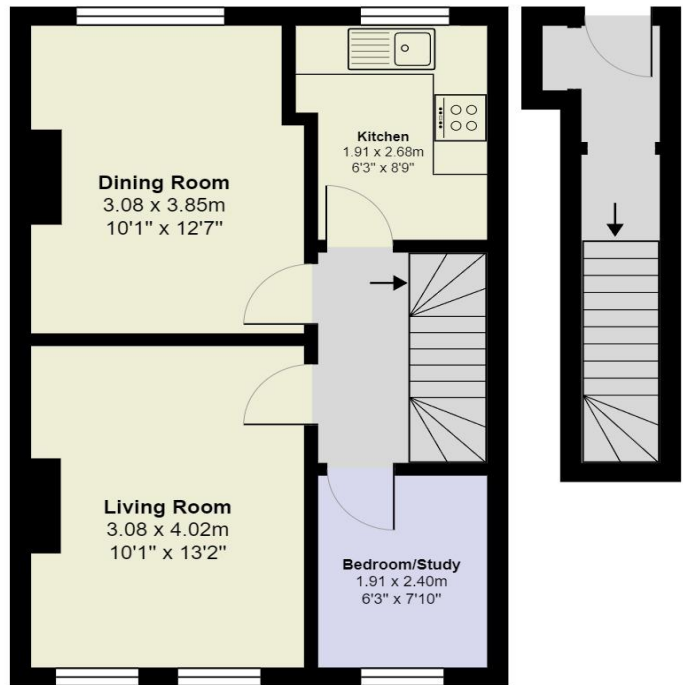




Croydon Road



2nd Floor



1st Floor

Total Area: 85.7 m² ... 922 ft²

All measurements are approximate and for display purposes only