

SPRUCE HILLS ROAD,
WALTHAMSTOW

Farr O'Neil
RESIDENTIAL ESTATE AGENTS



Available immediately | Sole use of garden | One bedroom ground floor garden flat | Spacious modern fitted kitchen / dining room with appliances | Good size lounge and bedroom | White bathroom suite | Own rear garden backing onto Chestnut Fields | Great spot for Wood Street Station and Walthamstow Central | EPC E | Council tax band B

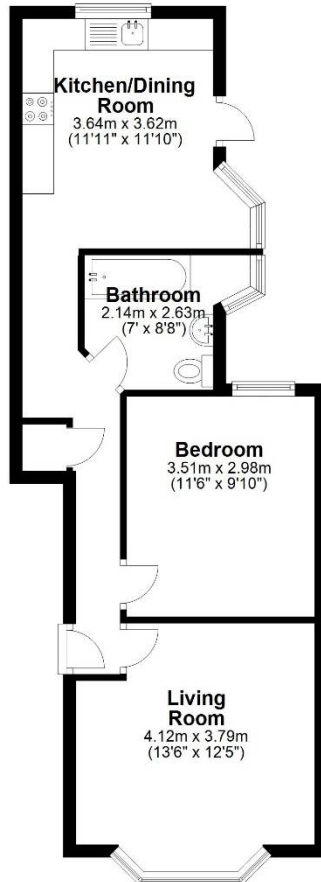
£1,400 per month



A lovely one bedroom ground floor garden flat, available immediately. Features include sole use of rear garden backing onto Chestnut Fields, modern fitted kitchen/dining room with appliances, newly fitted double glazing with blinds to the lounge and bedroom, white bathroom suite, spacious sitting room and a good size bedroom. Situated in a quiet residential turning in a great spot for Wood Street's shops, station and also Walthamstow Central.

Ground Floor

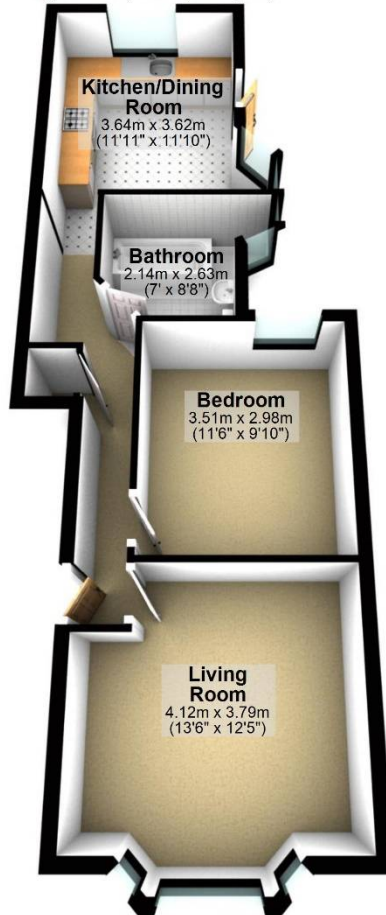
Approx. 47.5 sq. metres (510.8 sq. feet)



Total area: approx. 47.5 sq. metres (510.8 sq. feet)

Ground Floor

Approx. 47.5 sq. metres (510.8 sq. feet)



Total area: approx. 47.5 sq. metres (510.8 sq. feet)

Whilst every care is taken to ensure the accuracy of these details no responsibility for errors or misdescription can be accepted nor is any guarantee offered in respect of the property. These particulars do not constitute any part of an offer or contract.
Details Prepared on 31st January, 2024