

NORTH END,
BUCKHURST HILL

Farr O'Neil
RESIDENTIAL ESTATE AGENTS



Available immediately | First floor studio apartment | Spacious lounge /
bedroom space | Fitted kitchen with appliances | Bathroom with white
suite | Electric heating / Double glazing | Superb views | Council Tax Band
A | EPC rating E51

**£950 per
month**



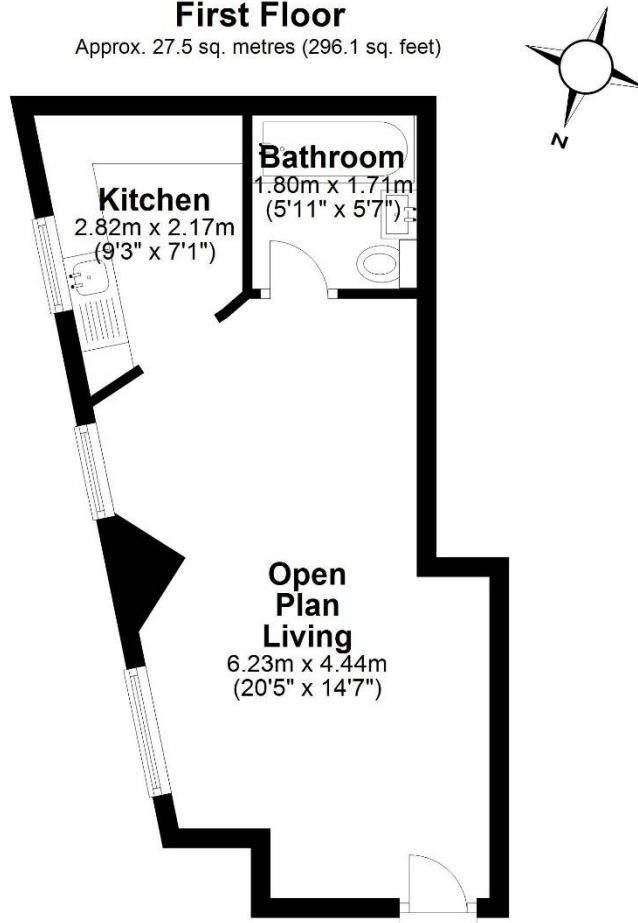
This recently refurbished first floor studio apartment is available immediately, and is ideally situated for Epping Forest, local transport and road links, with Queens Road and the Central Line a short walk away. The flat has a spacious living / bedroom space, fitted kitchen and a bathroom with a white suite.

Location

North End is a delightful location, facing Roebuck Green, which is part of the wider Epping Forest, but well placed for access to the trendy shops, cafes and restaurants in Queens Road in Buckhurst Hill, and also the more traditional Loughton High Road. The Central Line gives easy access to the City, Canary Wharf and West End, and for road users, the M25, M11 and routes into London are conveniently close by. This property is ideally situated close to the highly regarded St John's Primary School, and being surrounded by Epping Forest there are plenty of leisure pursuits on hand.

First Floor

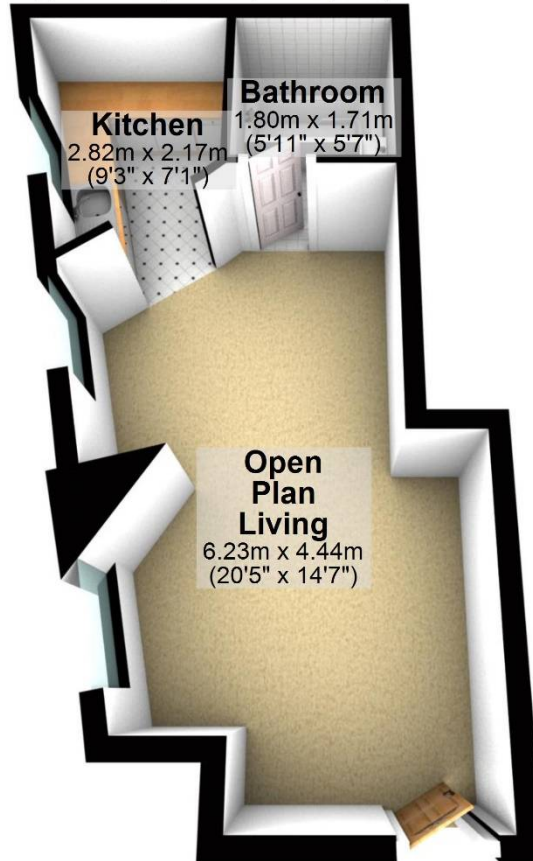
Approx. 27.5 sq. metres (296.1 sq. feet)



Total area: approx. 27.5 sq. metres (296.1 sq. feet)

First Floor

Approx. 27.5 sq. metres (296.1 sq. feet)



Total area: approx. 27.5 sq. metres (296.1 sq. feet)

Whilst every care is taken to ensure the accuracy of these details no responsibility for errors or misdescription can be accepted nor is any guarantee offered in respect of the property. These particulars do not constitute any part of an offer or contract.
Details Prepared on 27th July, 2022