

CHIGWELL LANE,
LOUGHTON,

Farr O'Neil
RESIDENTIAL ESTATE AGENTS



Top floor one bedroom apartment | Recently refurbished throughout | Open plan living space | Kitchen with high spec integrated appliances | Modern shower room | Available early February | Secure gated parking for two cars | Stone's throw from Central Line station | Excellent location with shops close by | EPC rating C75 / Council Tax band C

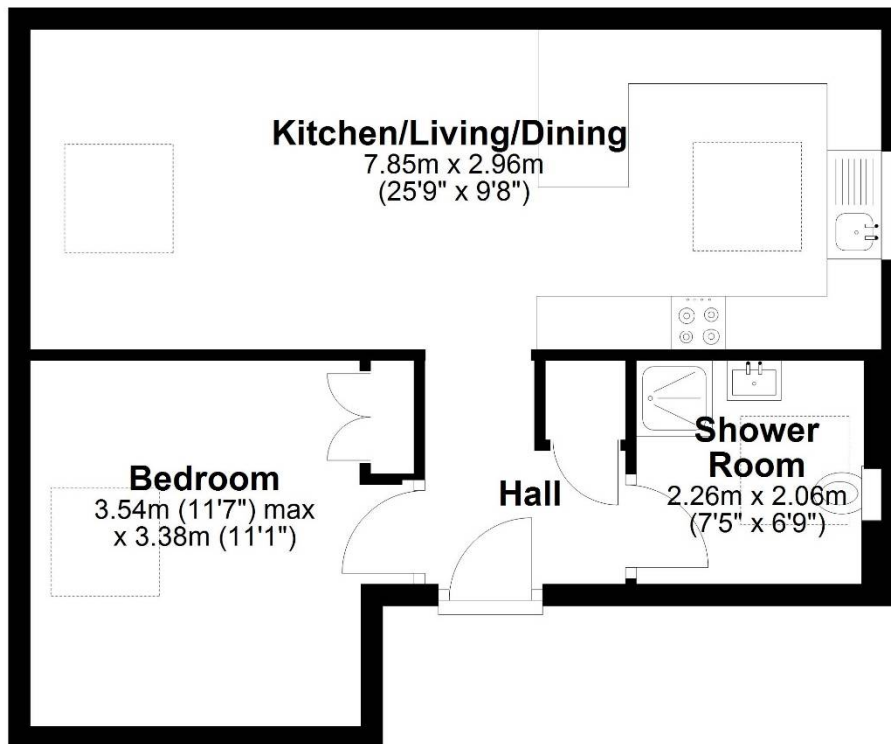
£1,400 per month



Available from early February. Superbly presented top floor apartment. Open plan living space with an integrated kitchen with top quality appliances. Secure gated parking for two cars plus visitor spaces. Stone's throw from Debden Central Line Station with direct links to the City & West End.

Third Floor

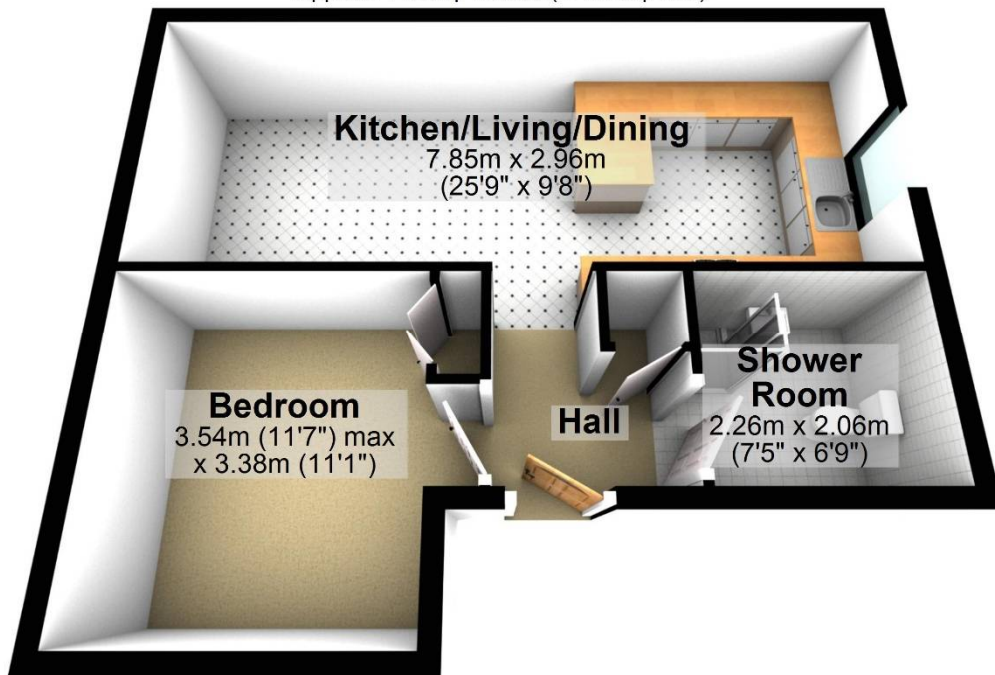
Approx. 44.2 sq. metres (475.8 sq. feet)



Total area: approx. 44.2 sq. metres (475.8 sq. feet)

Third Floor

Approx. 44.2 sq. metres (475.8 sq. feet)



Total area: approx. 44.2 sq. metres (475.8 sq. feet)

Whilst every care is taken to ensure the accuracy of these details no responsibility for errors or misdescription can be accepted nor is any guarantee offered in respect of the property. These particulars do not constitute any part of an offer or contract.
Details Prepared on 8th January, 2025