

Barton Villas, Dawlish, EX7 9QJ



A ground floor 1 double bedroom apartment situated in a popular level location on the town outskirts. The property benefits from an allocated parking space, gas central heating, uPVC double glazed windows and no onward chain.

LEASEHOLD, COUNCIL TAX BAND - A, EPC - D.

£125,000

01626 862379

www.fraserandwheeler.co.uk

FRASER & WHEELER

FRONT DOOR TO

ENTRANCE HALL

Doors to:

KITCHEN

Modern matching base and eye level units with work surfaces over, electric hob with oven below and extractor hood over, stainless steel sink, wall mounted central heating boiler and window to the side.

SITTING/DINING ROOM

A spacious room with radiator, uPVC double glazed windows to the front and door to:

BEDROOM

Radiator, uPVC double glazed window to the front, storage shelving and high level window providing natural light to the shower room.

SHOWER ROOM

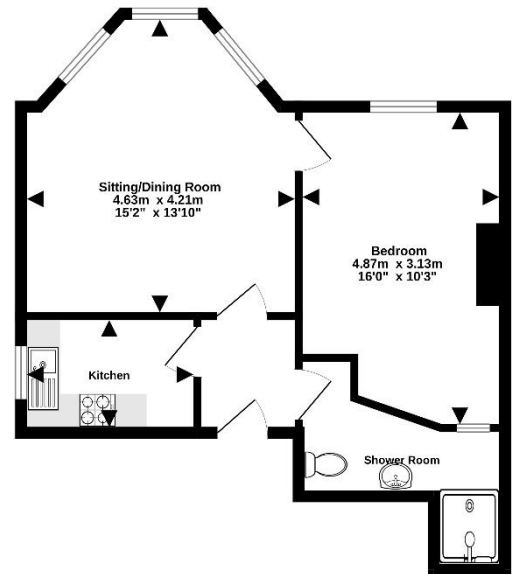
Comprising shower enclosure, WC and pedestal wash hand basin.

OUTSIDE

To the front of the property is an allocated parking space whilst to the rear is an eternal storage area.



Ground Floor
43.5 sq.m. (468 sq.ft.) approx.



TOTAL FLOOR AREA : 43.5 sq.m. (468 sq.ft.) approx.
 *Figures are provided for your information only and do not constitute a guarantee. Measurements are taken to the face of walls and doors are taken to the top edge. Measurements are taken to the face of walls and doors are taken to the top edge. Measurements are taken to the face of walls and doors are taken to the top edge.
 Made with WinLogo 10/21

