

# 5 Bezant Place

PENTIRE



**Jackie Stanley**  
ESTATE AGENTS



- **Sought After Coastal Location**
- **Moments from the World Famous Beach of Fistral & the Stunning Gannel Estuary**
- **Contemporary Three Storey Semi Detached Townhouse**
- **Four Bedrooms & Two Modern Bathrooms**
- **Pretty Enclosed Garden**
- **Carport Parking Bay with EV Charger**
- **Situated on the Outskirts of Vibrant Newquay**



Situated on the Pentire peninsular on the outskirts of vibrant Newquay and moments from world famous Fistral beach, is 5 Bezan Place.

This attractive three storey townhouse affords immediate enjoyment of the protected headland of Pentire, located between the stunning Gannel Estuary and revered surfing beach of Fistral.

5 Bezan Place is a four bedroom semi detached residence, more recently modernised to provide comfortable and stylish accommodation with quality fixtures and fittings.

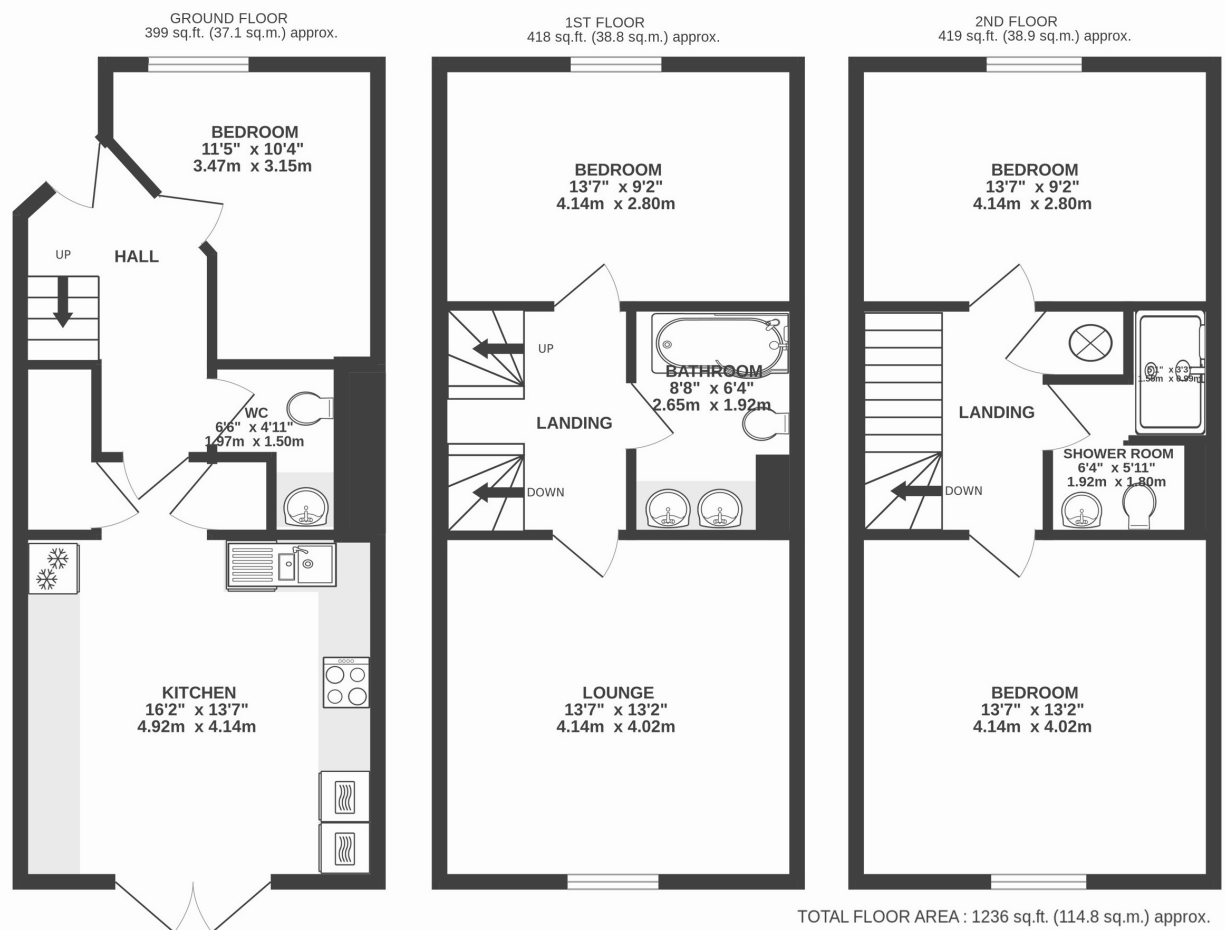
The three storeys of accommodation comprise a modern and fully equipped kitchen to the ground floor, complete with central island and French doors to the garden at the rear. The ground floor also has a bedroom, cloakroom and ample recessed storage. The first floor is home to the living room which affords views towards the ocean and ample space for sofas and occasional furniture. There is also a modern bathroom and double bedroom on this floor. Up on the second floor are two further double bedrooms and a stylish shower room.

To the rear of the house is an fully enclosed and secure garden with fence boundaries. The garden is completely decked on two tiers with an array of established planting, power and light. A timber gate gives access to the carport beyond, providing a single parking bay for the property and EV charger. Services to the property include mains gas, water, electricity and drainage. EPC rating C. Council tax band D. Ofcom suggest ultrafast broadband availability. Ofcom suggest 5G mobile connectivity.



**5 Bezant Place, Pentire, Newquay**  
**TR7 1SJ £495,000 guide**

t: 01841 532555  
 e: sales@jackie-stanley.co.uk  
 1 North Quay  
 Padstow  
 Cornwall  
 PL28 8AF



*"This attractive three storey townhouse affords immediate enjoyment of the protected headland of Pentire"*

5 Bezant Place is superbly situated in a quiet residential cul-de-sac on the outskirts of vibrant Newquay, affording enjoyment of the captivating Gannel Estuary and nearby golden sands at Crantock. The locality allows for easy access to the extensive array of shops, restaurants, bars and cafés of Newquay which also offers a cinema, zoo, aquarium, aqua park and boating lake together with the world famous surfing beach of Fistral. Newquay has good public transport links with bus and rail services while Newquay airport is just seven miles distant providing both domestic and international flights.

To find 5 Bezant Place, from Mount Wise roundabout head west along Pentire Road signposted to Pentire. Follow the road for approximately 0.3 miles before turning left into Pentire Crescent. Take the next left into Bezant Place and number 5 can be found along on the left hand side. The postcode for satellite navigation is TR7 1SJ. What3words: changed.flagpole.orchids