

Total area: approx. 83.9 sq. metres (902.9 sq. feet)



Alma Road | Orpington | BR5

£450,000

- Extended, semi-detached house
- Two reception rooms
- Attractive rear and front gardens
- Off-street parking
- 3 bedrooms (all with fitted/built-in storage)
- Contemporary family bathroom
- Garage
- Conveniently-situated

Energy Efficiency Rating		Current	Potential
Very energy efficient - lower running costs			
(92-100)	A		
(81-91)	B		85
(69-80)	C		
	D	59	
	E		
	F		
	G		
Not energy efficient - higher running costs			
England, Scotland & Wales		EU Directive 2002/91/EC	



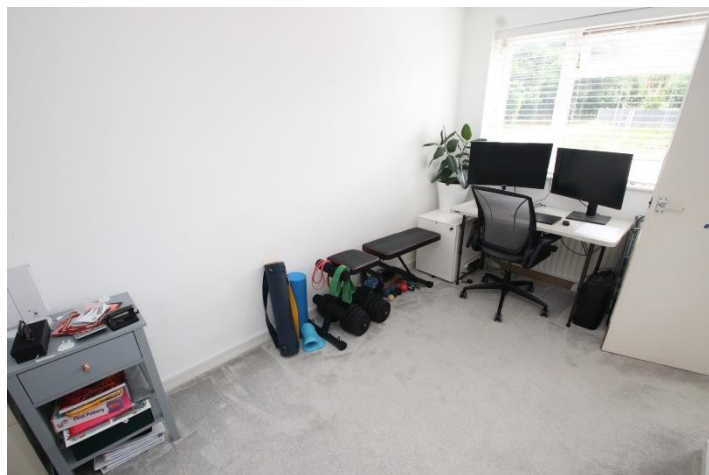
£450,000 Freehold

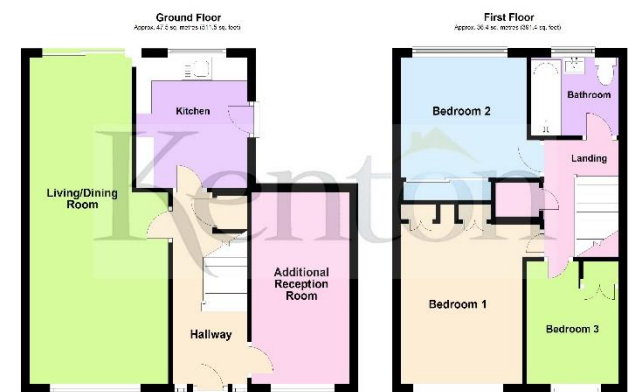


Alma Road, Orpington, BR5

Hallway

Bedroom 2





Total area: approx. 63.9 sq. metres (692.9 sq. feet)