



Westbourne Terrace, Paddington, W2

1 Bedrooms

£495,000 Long Lease



LONDON ESTATES



EXCELLENT LOCATION | UNDER FLOOR HEATING | DEVELOPMENT
POTENTIAL | WELL FINISHED | GOOD TRANSPORT LINKS | STRONG

Available Date: No Date

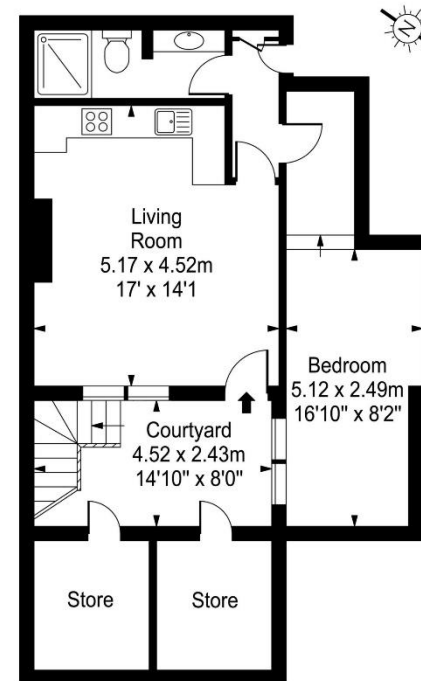
EPC Rating: D | Council Tax: D - £495,000 Long Lease



LONDON ESTATES

Westbourne Terrace

Approx. Gross Internal Area
46.68 Sq M - 502 Sq Ft
(Excluding Store)



Lower Ground Floor

Every attempt is made to assure accuracy, however
measurements are approximate and for illustrative purposes only. Not to scale.
Floor plan by www.frameworkphotos.co.uk