

Shepherds House W1K

LREO





Lee's Place W1K

£3,000 per week

Bright three bedroom apartment set on the top two floors (with lift) of this period property in Mayfair available to rent through LREO.

This south facing duplex apartment comprises a double reception, separate eat in kitchen and guest WC on the lower floor. On the top floor there is a good size principal suite with built in wardrobes and ensuite bathroom with double vanity and walk in shower, second double bedroom with built in wardrobes, Jack and Jill bathroom with tub, and third bedroom. The apartment is offered in immaculate condition and is furnished to a very high standard. Features include hardwood flooring in the kitchen and reception, large wine cooler and SONOS ceiling speakers.

Shepherds House is a small, well maintained property located just off North Audley Street and Grosvenor Square.

Contact Michael Sevilla
020 3348 8000
michael@lreo.co.uk



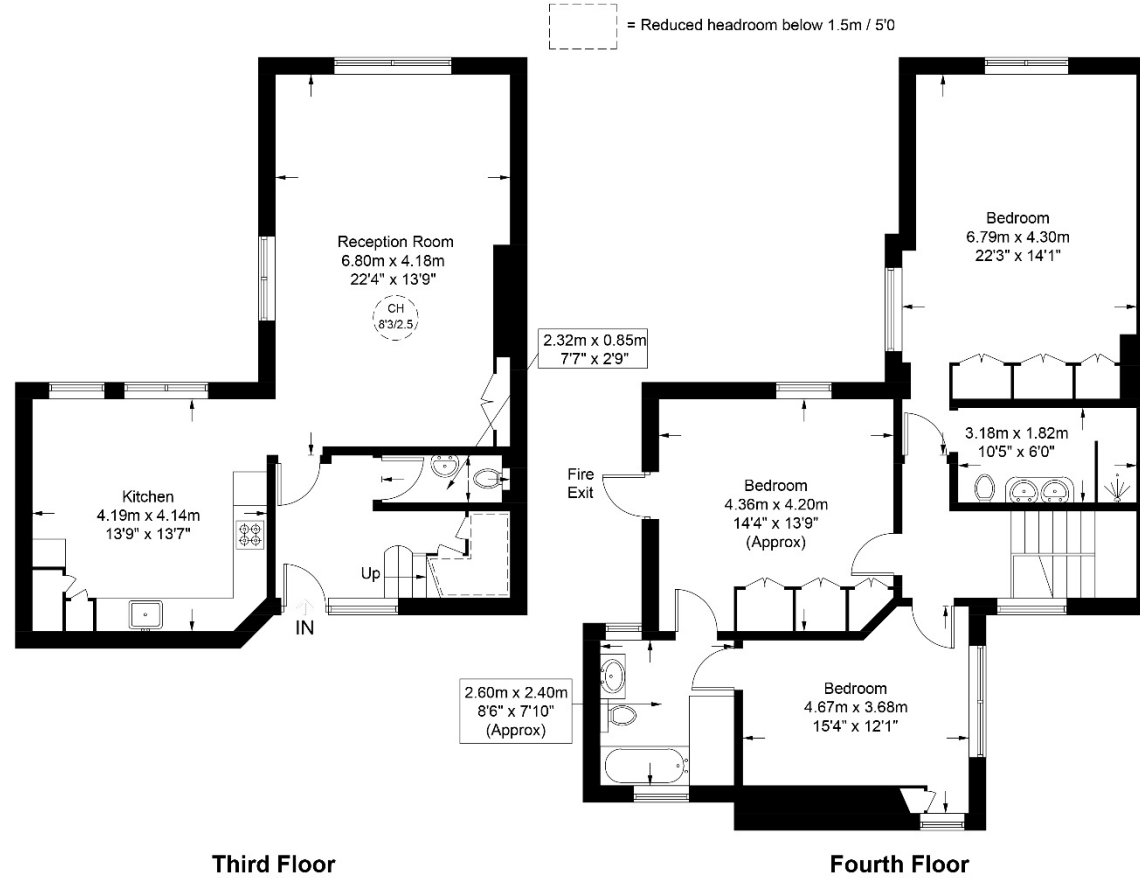
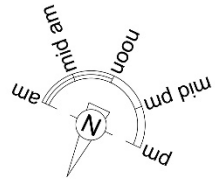




Shepherds House, W1K

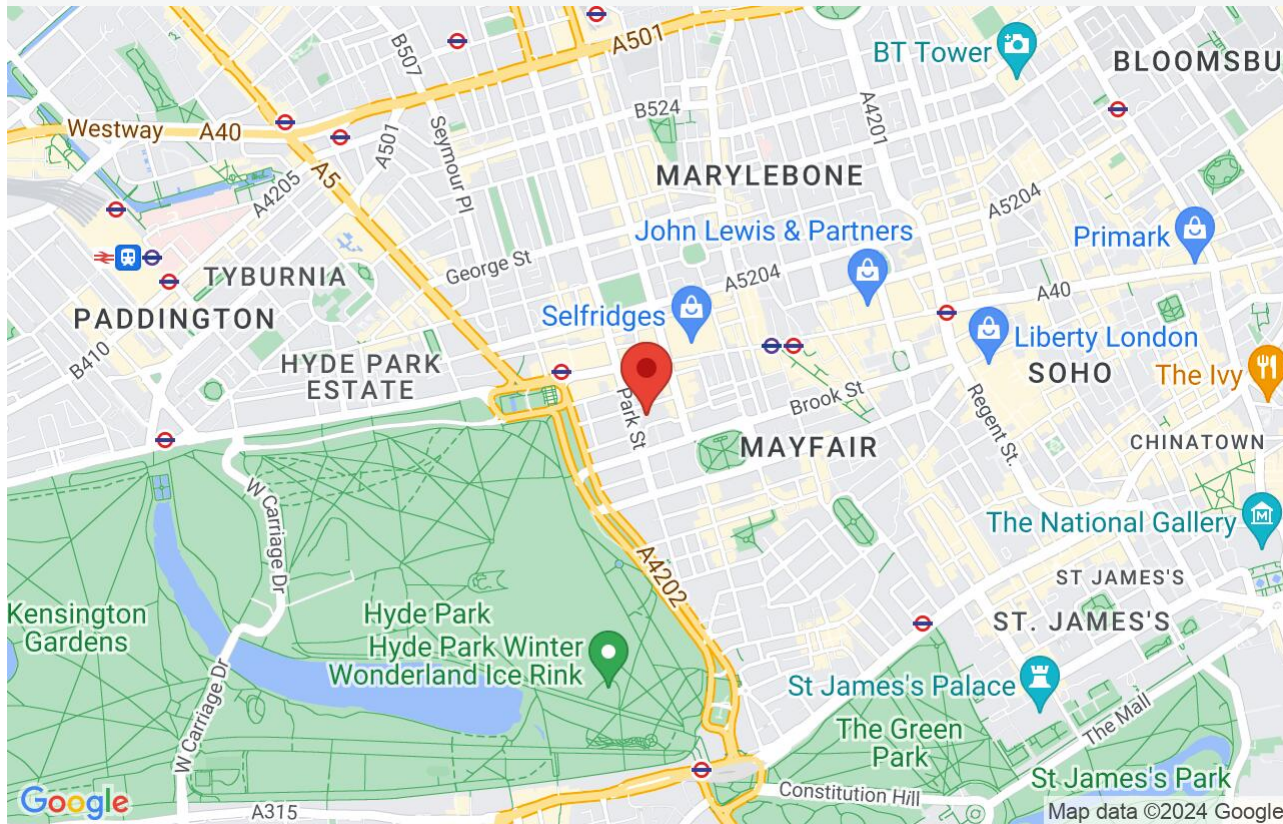
Approximate Gross Internal Area = 1449 sq ft / 134.6 sq m

Restricted Height = 17 sq ft / 1.6 sq m



This plan is for layout guidance only and is not drawn to scale unless stated. All dimensions, including windows, doors, and the Total Gross Internal Area (GIA), are approximate. For precise measurements, please consult a qualified architect or surveyor before making any decisions based on this plan.





3 Bed

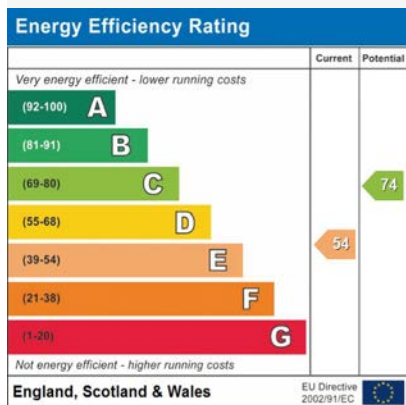
2 Bath

1 Reception

1,449 sq ft

Council Tax Band H

Top Floor Duplex
Lift



London Real Estate Office, their clients and any joint agents give notice that: 1: They are not authorised to make or give any representations or warranties in relation to the property either here or elsewhere, either on their own behalf or on behalf of their client or otherwise. They assume no responsibility for any statement that may be made in these particulars. These particulars do not form part of any offer or contract and must not be relied upon as statements or representations of fact. 2: Any areas, measurements or distances are approximate. The text, photographs and plans are for guidance only and are not necessarily comprehensive. It should not be assumed that the property has all necessary planning, building regulation or other consents and London Real Estate Office have not tested any services, equipment or facilities. Purchasers must satisfy themselves by inspection or otherwise.

LREO
LONDON REAL ESTATE OFFICE