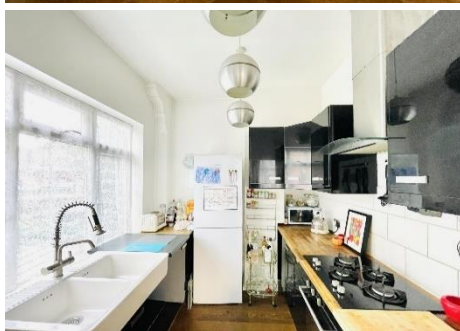


MAPESBURY

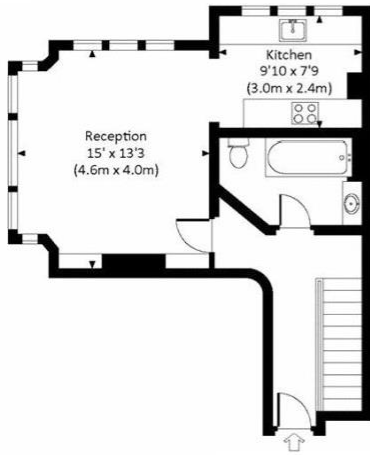


High Road, Willesden Green, NW10

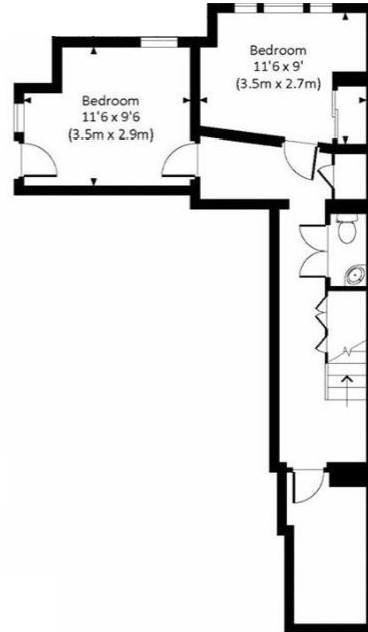
£450,000

- 2 Bed|1 Bath|1 Rec
- Close to Tube
- Duplex Maisonette
- Bay Windows
- High Ceilings
- Double Aspect
- Wooden Floors
- Leasehold

MAPESBURY



Raised Ground Floor



Lower Ground Floor

High Road Willesden NW10 2QG

Approx. Gross Internal Area 854 Sq Ft./79.3 Sq M.