



North Circular Road, Neasden, NW2

£375,000

- Ground Floor Retail
- Kitchen|2 WC
- Wooden Floors
- A406 & M1
- Electric Shutter
- Freehold
- 3 Separate Rooms
- Size: 680 Sq Ft

647 NORTH CIRCULAR ROAD, NW2 7AY
APPROXIMATE TOTAL INTERNAL FLOOR AREA:
680 SQ FT - 63.2 SQ M

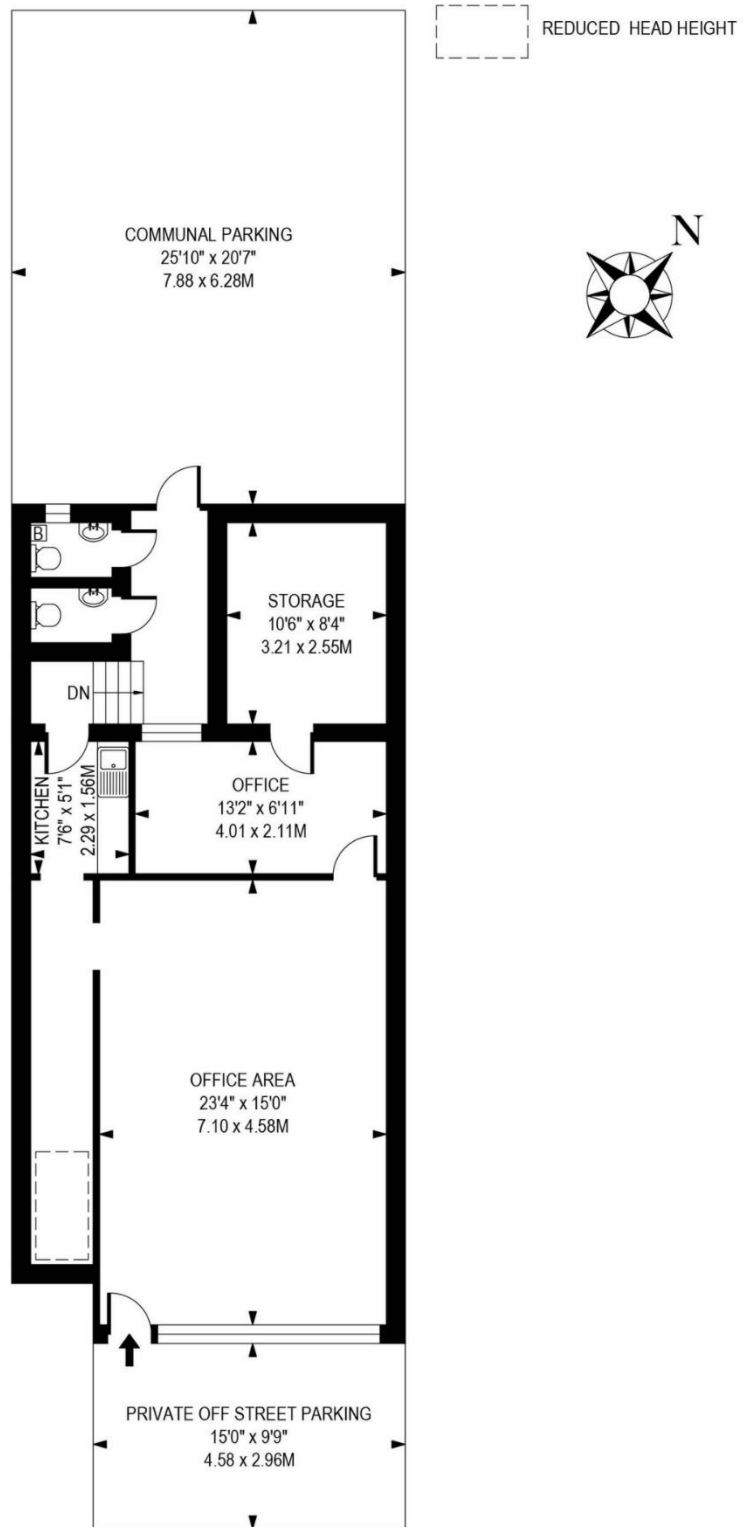


ILLUSTRATION FOR IDENTIFICATION PURPOSES ONLY, MEASUREMENTS ARE APPROXIMATE, NOT TO SCALE

THIS FLOOR PLAN SHOULD BE USED AS A GENERAL OUTLINE FOR GUIDANCE ONLY AND DOES NOT CONSTITUTE IN WHOLE OR IN PART AN OFFER OR CONTRACT.
ANY INTENDING PURCHASER OR LESSEE SHOULD SATISFY THEMSELVES BY INSPECTION, SEARCHES, ENQUIRIES AND FULL SURVEY AS TO THE CORRECTNESS OF EACH STATEMENT.