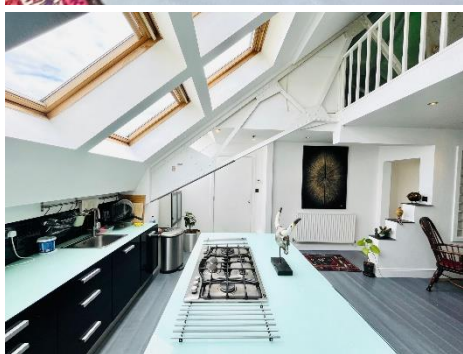


MAPESBURY



Chartwell Court, Dollis Hill, NW2

£650,000

- Luxury Penthouse
- Duplex (2 Floors)
- 2 Bed|2 Rec|2 Bath
- Gated Development
- CCTV|Lift Service
- Communal Gardens
- Allocated Parking
- Close to Park|Schools

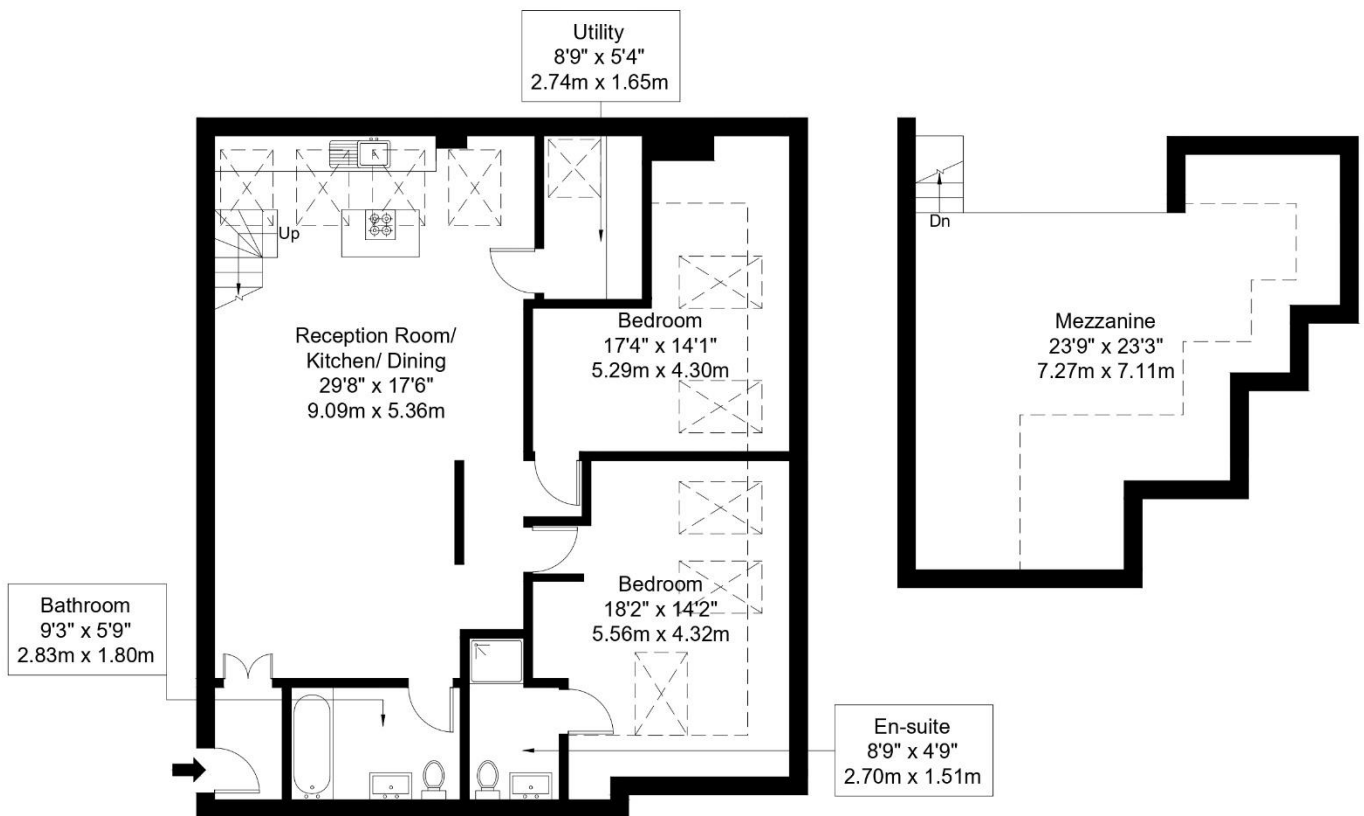
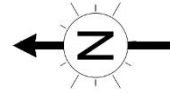
Brook Road, NW2 7DW

Approx Gross Internal Area = 118.29 sq m / 1237 sq ft

Restricted Head Height = 23.83 sq m / 256 sq ft

Total = 142.12 sq m / 1529 sq ft

Restricted Head Height 



Third Floor

Ref :

Copyright **BLEU
PLAN**

The Floor plan is not to scale and measurements and areas shown are approximate and therefore should be used for illustrative purposes only. The plan has been prepared in accordance with the RICS code of Measuring Practice and whilst we have confidence in the information produced it must not be relied on. If there is any aspect of particular importance, you should carry out or commission your own inspection of the property.

Copyright @ BLEUPLAN