



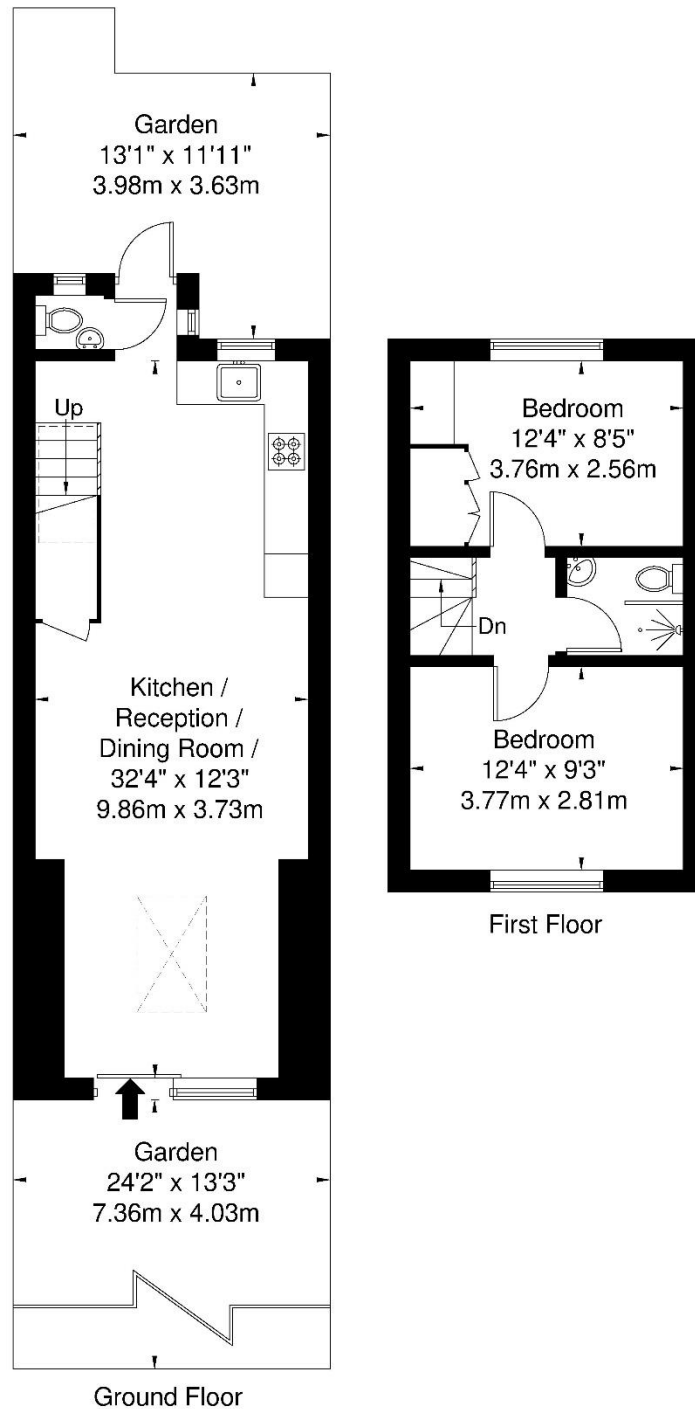
## Mapeshill Place, Willesden Green, NW2

**£569,950**

- 2 Bed|1 Bath|1 Rec
- Modern House
- Rear Extension
- Garden & Patio
- Integrated Kitchen
- Access to Garage
- Close to Tube
- Freehold

# Mapeshill Place, NW2 5LA

Approx Gross Internal Area = 64.9 sq m / 698 sq ft



Ref

Copyright **BLEU  
PLAN**

The Floor plan is not to scale and measurements and areas shown are approximate and therefore should be used for illustrative purposes only. The plan has been prepared in accordance with the RICS code of Measuring Practice and whilst we have confidence in the information produced it must not be relied on. If there is any aspect of particular importance, you should carry out or commission your own inspection of the property.

Copyright @ BLEUPLAN