

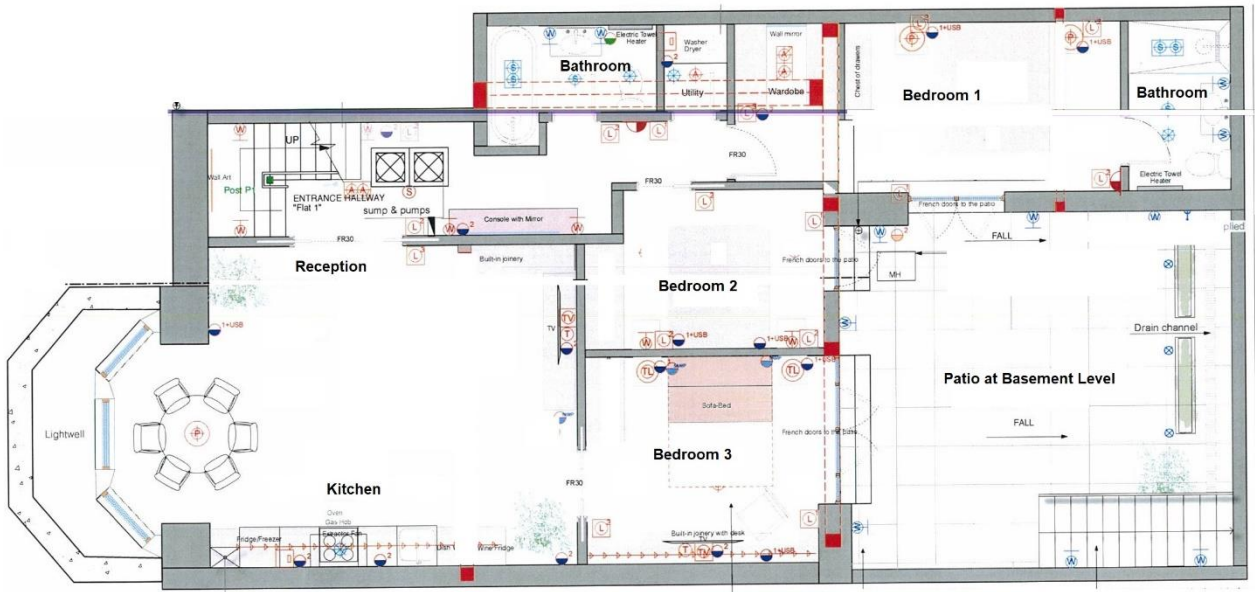
MAPESBURY



Brondesbury Road, Queens Park, NW6

£1,060 per week

- New Boutique Home
- Basement Flat
- Miele Appliances
- Amtico Flooring
- 3 Bed|2 Bath|1 Rec
- High Ceilings
- Ample Storage
- Private Patio



Basement Flat Brondesbury Park NW6 6BS
GIA: 915 Sq Ft (85 Sq M) Approx.