

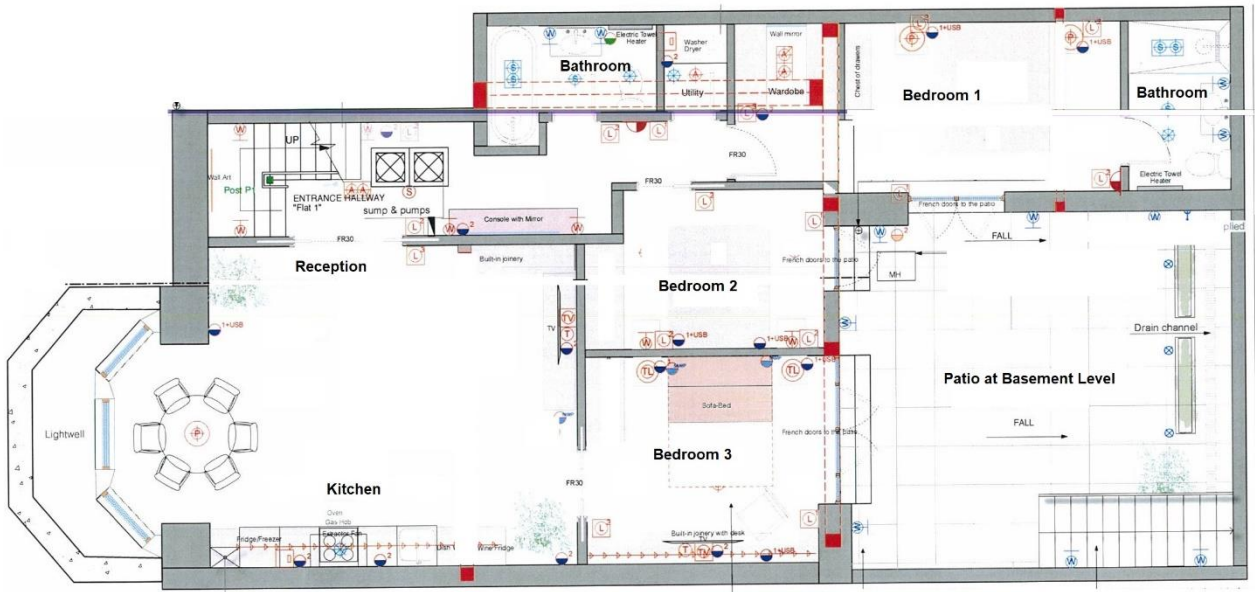
# MAPESBURY



**Brondesbury Road, Queens Park, NW6**

**£924 per week**

- New Boutique Home
- Basement Flat
- Miele Appliances
- Amtico Flooring
- 3 Bed|2 Bath|1 Rec
- High Ceilings
- Ample Storage
- Private Patio



**Basement Flat Brondesbury Park NW6 6BS**  
**GIA: 915 Sq Ft (85 Sq M) Approx.**