



Oxgate Gardens, Dollis Hill, NW2

£1,000,000 OIRO

- Detached House
- Private Garden
- Bay Windows
- Close to Park
- 4 Bed|2 Rec|2 Bath
- Secure Side Garage
- Stunning Views
- Close to Schools

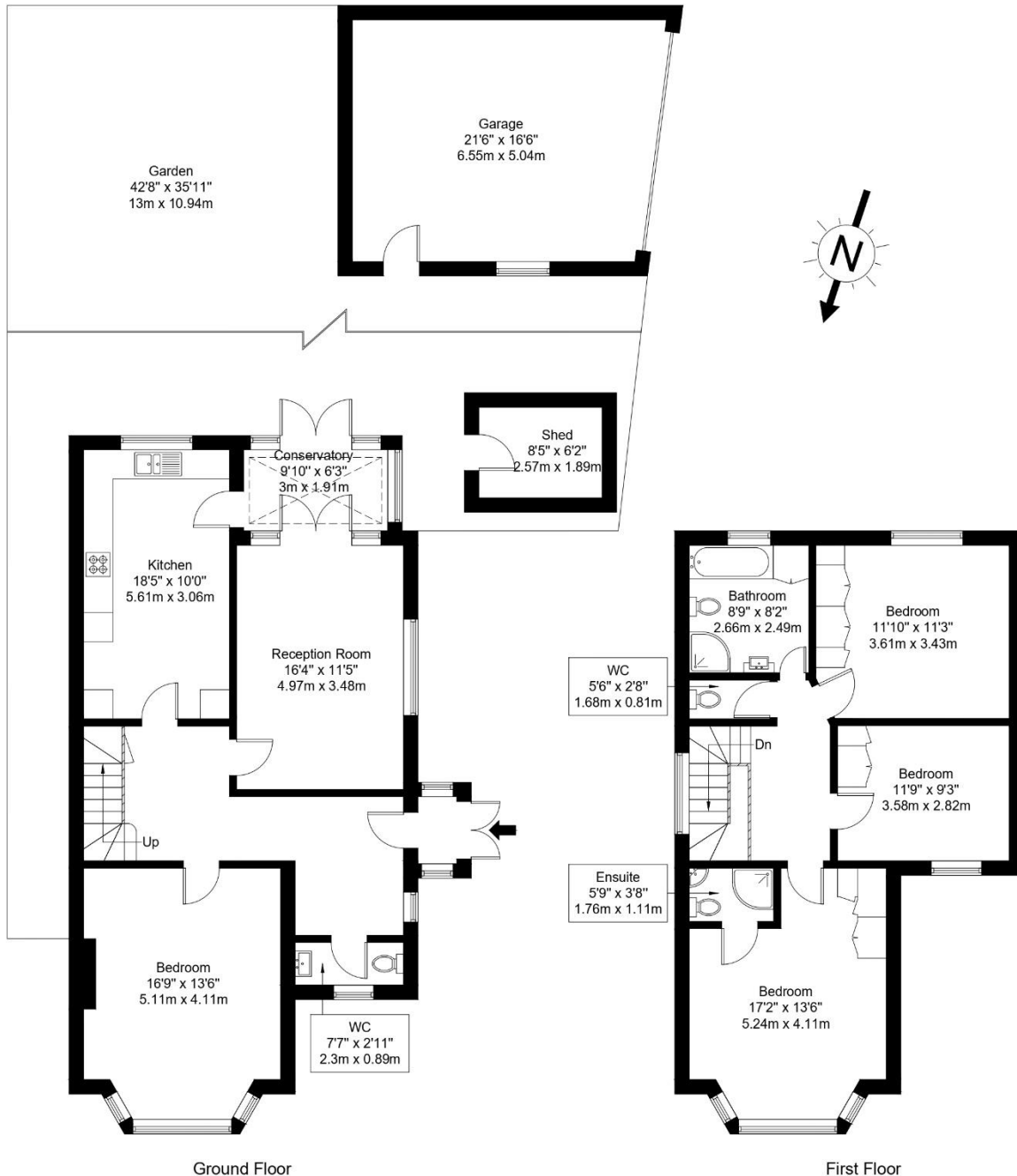
Oxgate Gardens, NW2 6EB

Approx Gross Internal Area = 150.3 sq m / 1618 sq ft

Shed = 4.9 sq m / 53 sq ft

Garage = 31.4 sq m / 338 sq ft

Total = 186.6 sq m / 2009 sq ft



Ref :

Copyright **BLEU PLAN**

The Floor plan is not to scale and measurements and areas shown are approximate and therefore should be used for illustrative purposes only. The plan has been prepared in accordance with the RICS code of Measuring Practice and whilst we have confidence in the information produced it must not be relied on. Maximum lengths and widths are represented on the floor plan. If there is any aspect of particular importance, you should carry out or commission your own inspection of the property.

Copyright @ BleuPlan