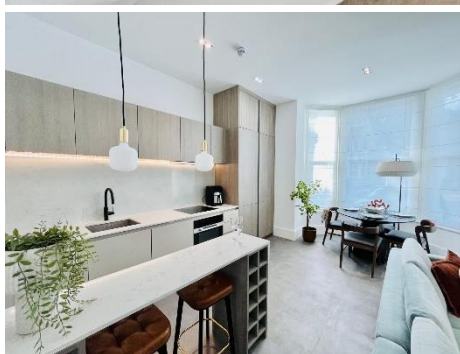


MAPESBURY



Brondesbury Road, Queens Park, NW6

£981 per week

- New Boutique Home
- Ground Floor Flat
- Private Garden
- Amtico Flooring
- 3 Bed|3 Bath|1 Rec
- High Ceilings
- Bright Interiors
- Close to Amenities



Brondesbury Road London NW6 6BS
Approx. GIA: 947 Sq Ft (88 Sq M)