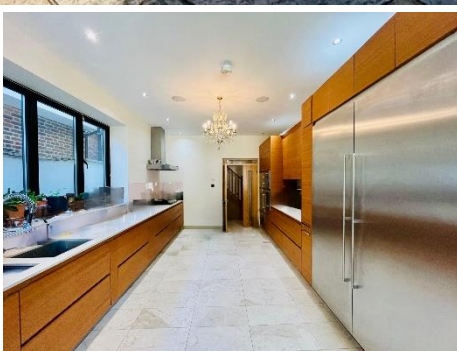


# MAPESBURY



**Brondesbury Park, Brondesbury, NW6**

**£1,846 per week**

- Detached Home
- 7 Bed|6 Bath|3 Rec
- Luxury Interiors
- Private Driveway
- Parking upto 5 Cars
- Rear Garden
- Summer Out House
- Gaggenau Kitchen

# Brondesbury Park, London, NW6

APPROX. GROSS INTERNAL FLOOR AREA 3235 SQFT / 300.5 SQM (Excludes Outbuilding)

