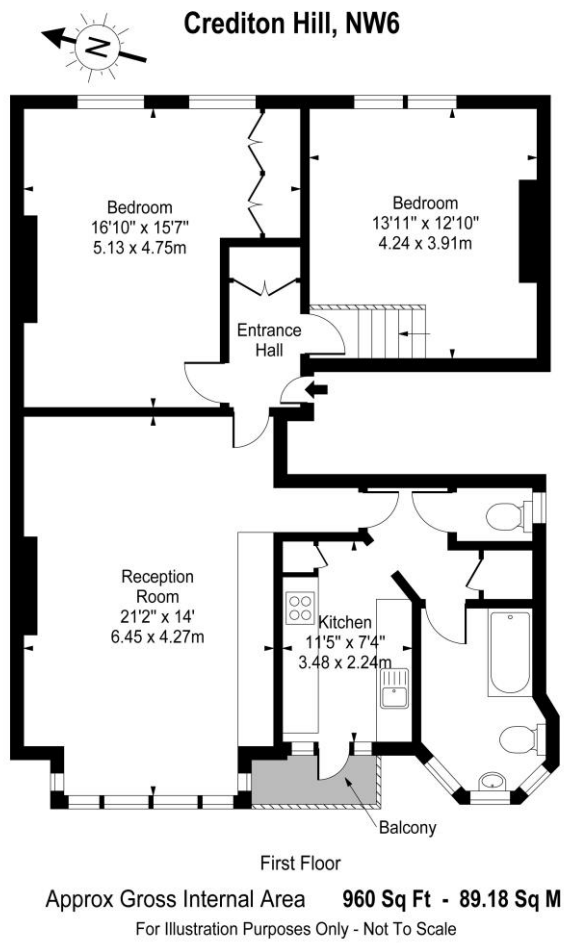




2 Bedroom Flat
Crediton Hill
London NW6

- First floor within a period conversion
- Ample storage to both bedrooms
- Two double bedrooms
- Modern kitchen with integrated appliances

Price: £634.62 pw / £2,750 pcm



Environmental Impact (CO ₂) Rating		
	Current	Potential
<i>Very environmentally friendly - lower CO₂ emissions</i>		
(92-100) A		
(81-91) B		81
(69-80) C		
(55-68) D	62	
(39-54) E		
(21-38) F		
(1-20) G		
<i>Not environmentally friendly - higher CO₂ emissions</i>		
England, Scotland & Wales		EU Directive 2002/91/EC

Energy Efficiency Rating		
	Current	Potential
<i>Very energy efficient - lower running costs</i>		
(92-100) A		
(81-91) B		79
(69-80) C		
(55-68) D	64	
(39-54) E		
(21-38) F		
(1-20) G		
<i>Not energy efficient - higher running costs</i>		
England, Scotland & Wales		EU Directive 2002/91/EC

A superbly located two double bedroom first floor split level apartment (960 sq ft.) set within this imposing period conversion. Comprising a bright and spacious reception room with bay window, separate fitted kitchen with all appliances and with ample amounts of surface and storage space and leading to a Juliette balcony, two generous double bedrooms with built-in storage, tiled bathroom and guest cloakroom. Crediton Hill is located moments from West End Lane conveniently located for both Thameslink and Overground services, Jubilee line and multiple bus routes served on West End Lane as well as the independent shops, bars, and restaurants offered in West Hampstead. Unfurnished. Avail NOW!

ML Estates wish to advise prospective purchasers that we have not checked the services or appliances. These particulars have been prepared as a guide only, any floor-plan or map is for illustrative purposes only. ML Estates, for themselves and for the vendors or lessors of this property whose agents they are given notice that: the particulars have been produced in good faith; do not constitute any part of a contract; no person in the employment of ML Estates has any authority to make or give any representation of warranty in relation to this property.