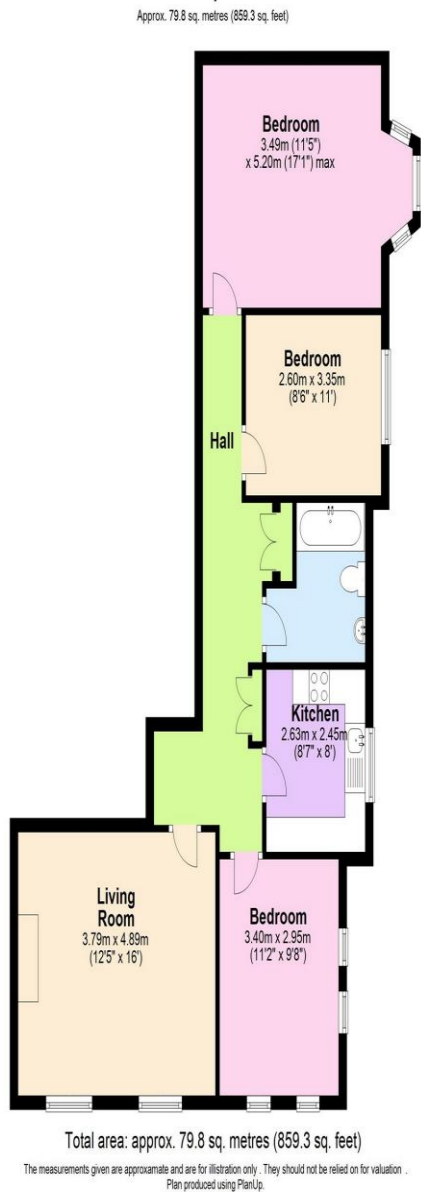




3 Bedroom Flat
Shoot-Up Hill
London NW2

- Newly Refurbished
- Wood floors
- Three double bedrooms
- Purpose built mansion block flat

Price: £525,000



A recently refurbished three double bedroom apartment within this purpose-built mansion block in Kilburn. Comprising a fully fitted kitchen with all appliances, spacious living room, new carpets to all bedrooms, luxury tiled bathroom with shower. Warwick Lodge is 0.3 miles from the Jubilee line at Kilburn and 0.4 miles to Brondesbury Overground station. Part furnished. Lift.

| Environmental Impact (CO ₂) Rating | | |
|---|-----------|-------------------------|
| | Current | Potential |
| <i>Very environmentally friendly - lower CO₂ emissions</i> | | |
| (92-100) A | | |
| (81-91) B | | 83 |
| (69-80) C | | |
| (55-68) D | 68 | |
| (39-54) E | | |
| (21-38) F | | |
| (1-20) G | | |
| <i>Not environmentally friendly - higher CO₂ emissions</i> | | |
| England, Scotland & Wales | | EU Directive 2002/91/EC |
| Energy Efficiency Rating | | |
| | Current | Potential |
| <i>Very energy efficient - lower running costs</i> | | |
| (92-100) A | | |
| (81-91) B | | 82 |
| (69-80) C | | |
| (55-68) D | 71 | |
| (39-54) E | | |
| (21-38) F | | |
| (1-20) G | | |
| <i>Not energy efficient - higher running costs</i> | | |
| England, Scotland & Wales | | EU Directive 2002/91/EC |

ML Estates wish to advise prospective purchasers that we have not checked the services or appliances. These particulars have been prepared as a guide only, any floor-plan or map is for illustrative purposes only. ML Estates, for themselves and for the vendors or lessors of this property whose agents they are given notice that: the particulars have been produced in good faith; do not constitute any part of a contract; no person in the employment of ML Estates has any authority to make or give any representation of warranty in relation to this property.