

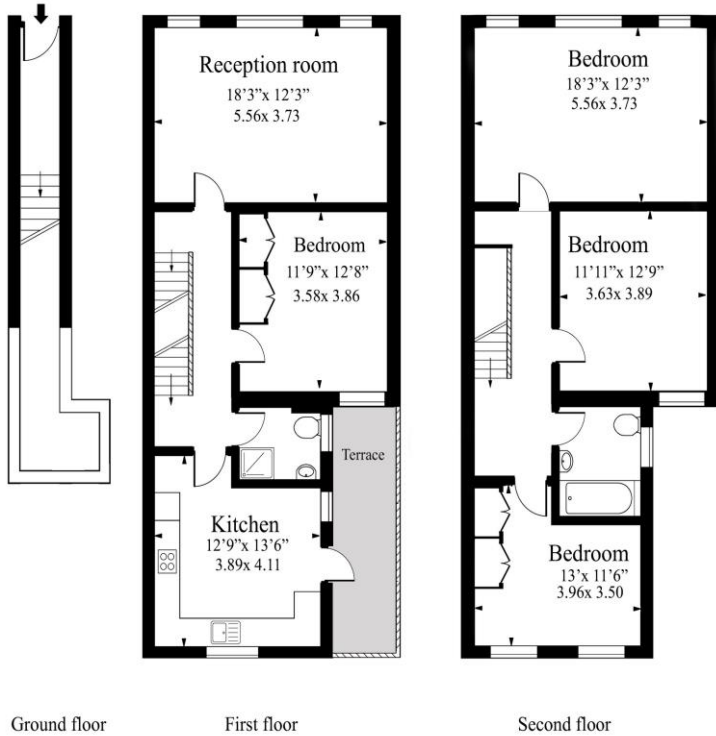


4 Bedroom Flat
Finchley Road
London NW11

- Four Double Bedrooms
- Two Bathrooms
- Duplex
- Family Only

Price: £700 pw / £3,033.33 pcm

Finchley Road NW11 Temple Fortune



Energy Efficiency Rating		
	Current	Potential
<i>Very energy efficient - lower running costs</i>		
(92-100) A		
(81-91) B		
(69-80) C		
(55-68) D	62	69
(39-54) E		
(21-38) F		
(1-20) G		
<i>Not energy efficient - higher running costs</i>		
England, Scotland & Wales		EU Directive 2002/91/EC

Approx Gross Internal Area 1410 Sq Ft - 131 Sq M

Measured in accordance with RICS guidelines. Every attempt is made to ensure accuracy. However all measurements are approximate. The floor plan is illustrative purposes only and is not to scale. www.tomekphotography.co.uk



We are delighted to offer this super large duplex property situated on the 1st floor above retail on the Finchley Road in Temple Fortune, wood floors, spacious eat in kitchen, Bright reception room, with a small balcony off the kitchen. Two bathrooms, Part Furnished. Ideally suit a family, Vacant now, ready for a family to move into. Call for more details and to arrange a viewing. NO HMO on this property , so FAMILIES ONLY.

ML Estates wish to advise prospective purchasers that we have not checked the services or appliances. These particulars have been prepared as a guide only, any floor-plan or map is for illustrative purposes only. ML Estates, for themselves and for the vendors or lessors of this property whose agents they are given notice that: the particulars have been produced in good faith; do not constitute any part of a contract; no person in the employment of ML Estates has any authority to make or give any representation of warranty in relation to this property.