

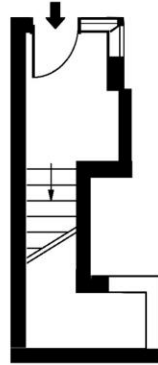
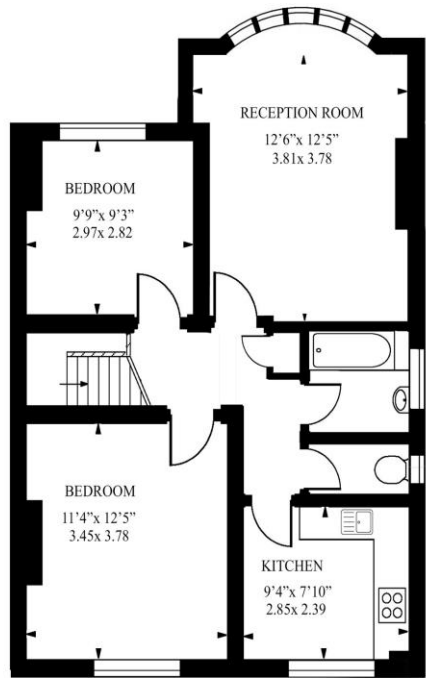


2 Bedroom Conversion
Cricklewood Lane
London NW2

- Top Floor
- Loft Extension Potential
- Two Bedrooms
- Modern Kitchen

Asking price of £375,000
Long Lease

Cricklewood Lane NW2



First floor

Approx Gross Internal Area 635 sq ft - 59.0 sq m

Measured in accordance with RICS guidelines. Every attempt is made to ensure accuracy. However all measurements are approximate. The floor plan is illustrative purposes only and is not to scale
www.tomekphotography.co.uk



Energy Efficiency Rating		
	Current	Potential
<i>Very energy efficient - lower running costs</i>		
(92-100) A		
(81-91) B		
(69-80) C	69	79
(55-68) D		
(39-54) E		
(21-38) F		
(1-20) G		
<i>Not energy efficient - higher running costs</i>		
England, Scotland & Wales	EU Directive 2002/91/EC	

Charming Two-Bedroom First-Floor Flat in a Period Conversion.

Nestled within a beautifully converted two-story semi-detached period house, this delightful two-bedroom first-floor flat offers a perfect blend of character and convenience. Situated on a quiet, setback location with the added benefit of off-street parking, this property is ideal for professionals, small families, or investors. Enjoy the best of urban living with an array of local amenities, parks, and shopping options nearby, while benefitting from quick and easy access to Central London. Don't miss this opportunity to own a unique flat in a sought-after location. Schedule you're viewing today!

ML Estates wish to advise prospective purchasers that we have not checked the services or appliances. These particulars have been prepared as a guide only, any floor-plan or map is for illustrative purposes only. ML Estates, for themselves and for the vendors or lessors of this property whose agents they are given notice that: the particulars have been produced in good faith; do not constitute any part of a contract; no person in the employment of ML Estates has any authority to make or give any representation of warranty in relation to this property.