



9 HIGH STREET, HYTHE

£200,000 Leasehold

What an impressive location in the centre of Hythe with a private balcony... Welcome to 9 High Street.



9 High Street Hythe CT21 5AD

- Second Floor apartment
- Stunning Views
- Communal Lift
- Town Centre location
- Recently refurbished
- EPC rating B

Description

Situated on Hythe High Street is this stunning second floor penthouse apartment offered to the market with private balcony looking over the Hythe High Street. There is a really nice feel even as you walk through the communal entrance and a lift services the first and second floor apartments but when you enter your apartment you really feel the 'wow factor'. The owner has put great effort into the apartment giving you high quality finishes, built in appliances and quartz worktops. The apartment is being offered with a 999 year lease and the other two apartments in the block are earning £1200pcm in rental income. Photos and floorplan are representative of size and finish, not for this apartment.

Tenure Leasehold

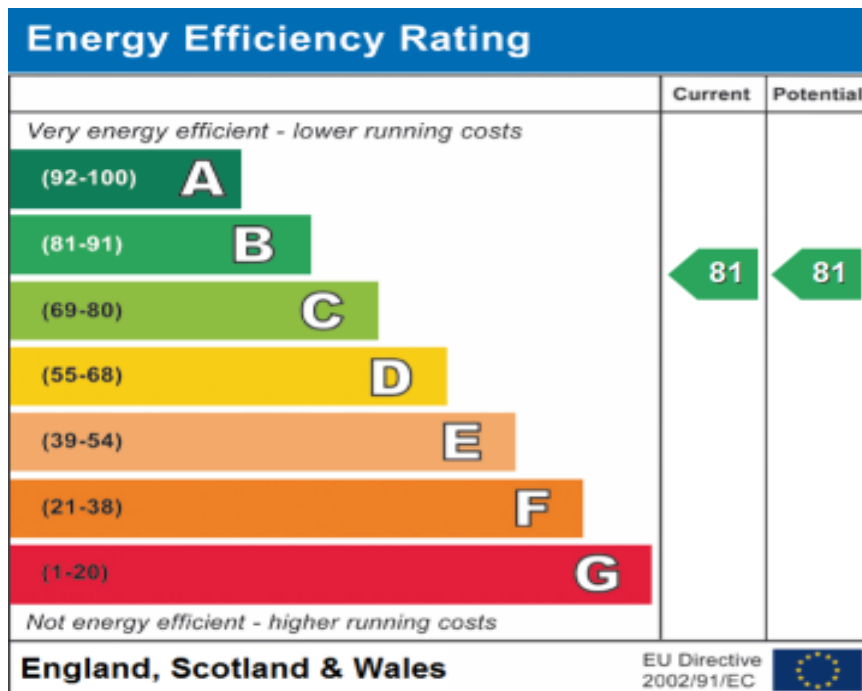
Postcode CT21 5AD

Viewings Strictly by appointment only -
Property Reference MOTIS_005374

Opening Hours:

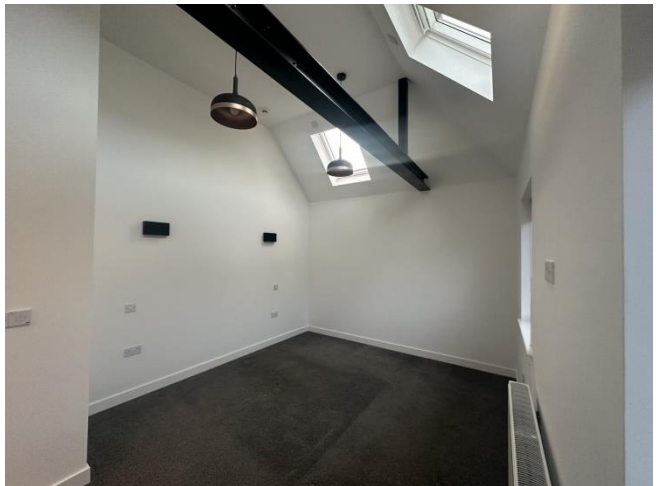
Monday - Friday 9.00 - 5.30

Saturday 9.00 - 3.00

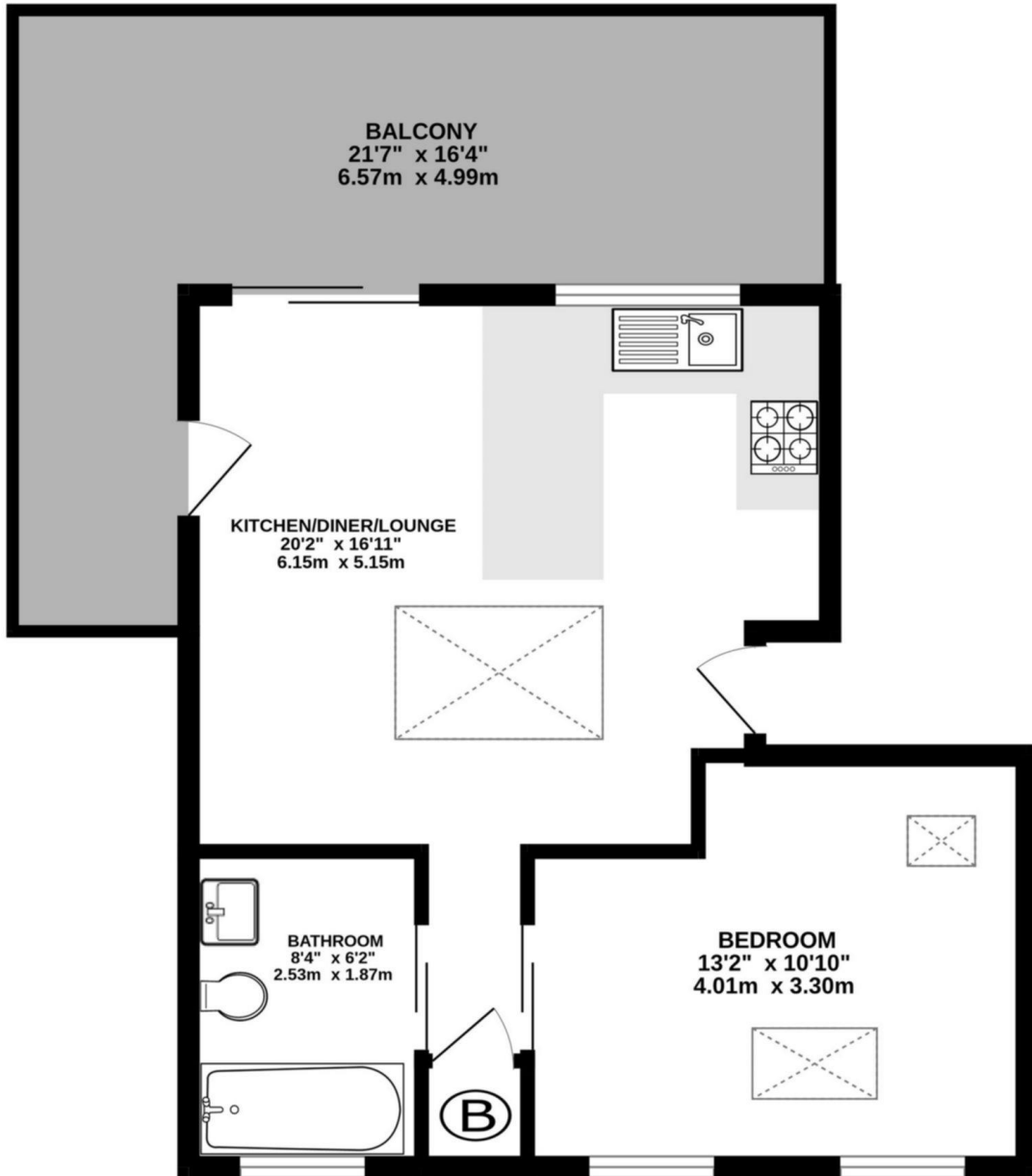






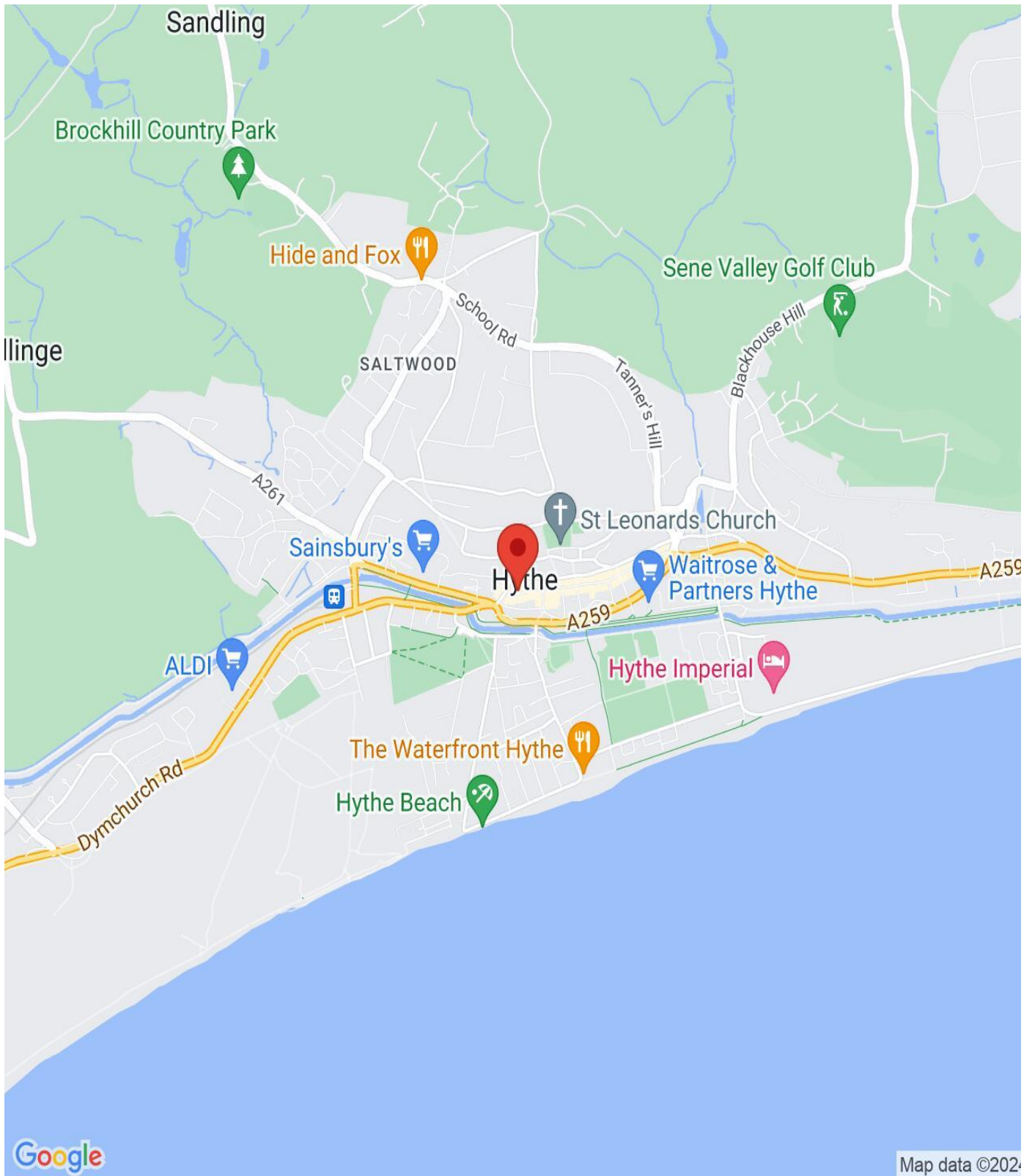


GROUND FLOOR
438 sq.ft. (40.7 sq.m.) approx.



TOTAL FLOOR AREA : 438 sq.ft. (40.7 sq.m.) approx.

Whilst every attempt has been made to ensure the accuracy of the floorplan contained here, measurements of doors, windows, rooms and any other items are approximate and no responsibility is taken for any error, omission or mis-statement. This plan is for illustrative purposes only and should be used as such by any prospective purchaser. The services, systems and appliances shown have not been tested and no guarantee as to their operability or efficiency can be given.
Made with Metropix ©2024



IMPORTANT NOTICE

Descriptions of the property are subjective and are used in good faith as an opinion and NOT as a statement of fact. Please make further specific enquires to ensure that our descriptions are likely to match any expectations you may have of the property. We have not tested any services, systems or appliances at this property. We strongly recommend that all the information we provide be verified by you on inspection, and by your Surveyor and Conveyancer.