



SANDGATE HILL, FOLKESTONE

£1,500 per month

A unique two-bedroom apartment in Sandgate, a remarkable residence that once housed the historic Sandgate Hill Liff, which first opened its doors in 1893.



Sandgate Hill Folkestone CT20 3AX

**TWO BEDROOMS, BALCONY , PARKING , CLOSE TO THE BEACH ,
CLOSE TO LOCAL AMENITIES ,**

Description

A unique two-bedroom apartment in Sandgate, a remarkable residence that once housed the historic Sandgate Hill Lift, which first opened its doors in 1893.

This property seamlessly blends rich heritage with modern living, offering a one-of-a-kind home in a prime location.

As you step inside, you are greeted by a spacious and light-filled living area, thoughtfully designed to maximize comfort and style. The open-plan layout includes a modern kitchen equipped with contemporary appliances and ample storage.

The apartment features two well-proportioned bedrooms, each offering plenty of natural light. The sleek bathroom is elegantly finished, providing a bath, separate shower, WC and hand basin. One of the standout features of this property is the private balcony.

Additionally, the apartment includes a designated parking space, ensuring convenience and peace of mind. Located in the charming village of Sandgate, this unique home offers easy access to local amenities, beautiful beaches, and excellent transport links. It's a perfect blend of historic charm and modern convenience.

No pets, no smokers and working tenants preferred.

Please contact Motis Estates to arrange a viewing on: 01303 212025

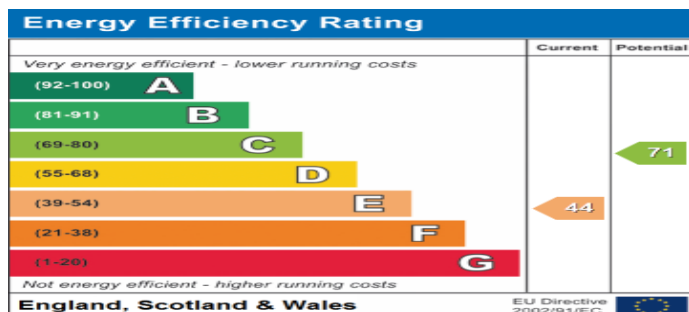
Postcode CT20 3AX

Viewings Strictly by appointment only -
Property Reference MOTIS_005711

Opening Hours:

Monday - Friday 9.00 - 5.30

Saturday 9.00 - 3.00



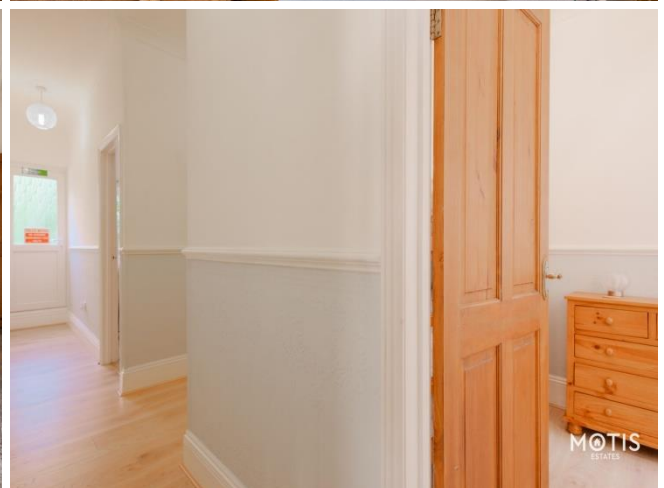


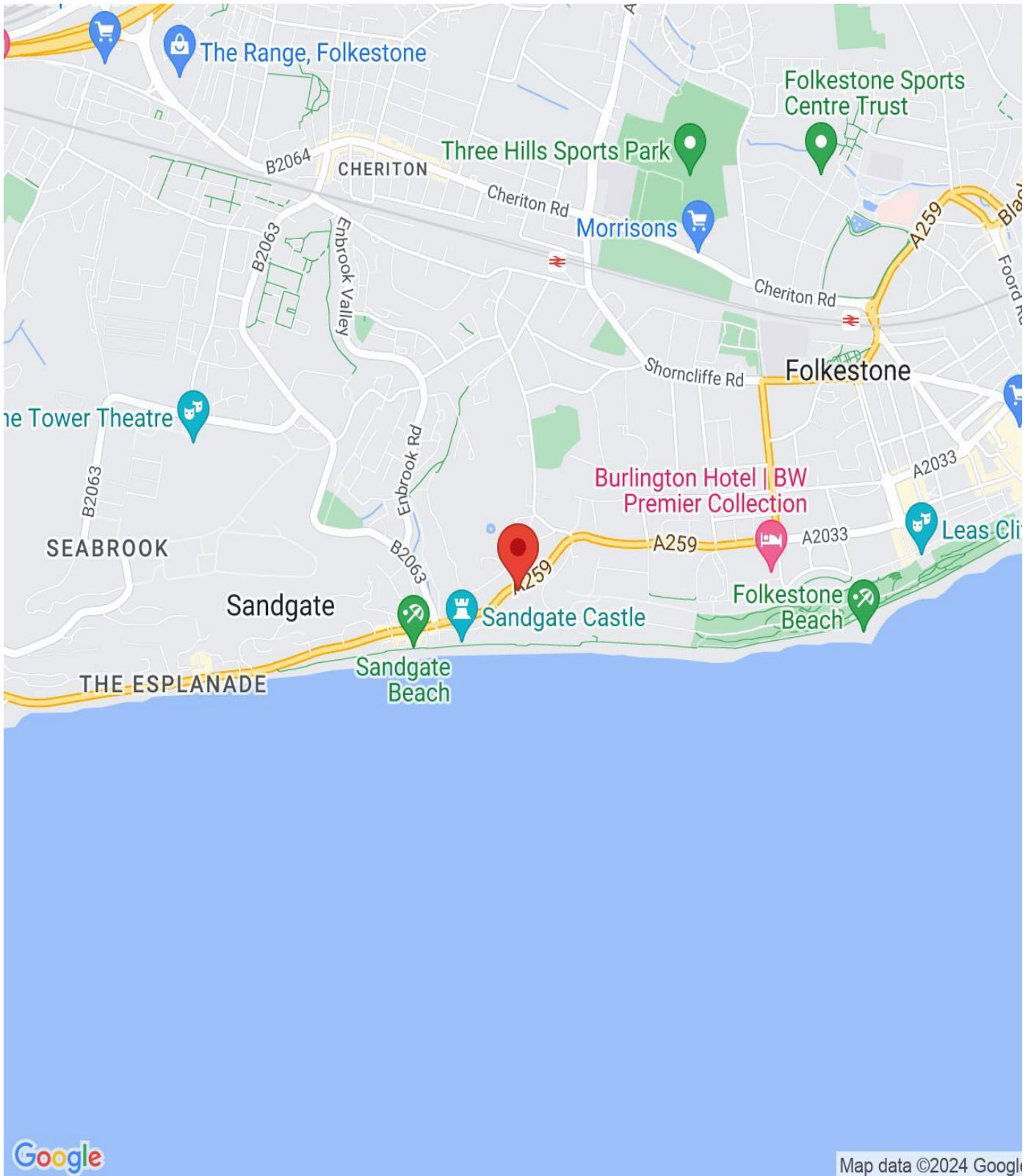


MOTIS
ESTATES



MOTIS
ESTATES





IMPORTANT NOTICE

Descriptions of the property are subjective and are used in good faith as an opinion and NOT as a statement of fact. Please make further specific enquires to ensure that our descriptions are likely to match any expectations you may have of the property. We have not tested any services, systems or appliances at this property. We strongly recommend that all the information we provide be verified by you on inspection, and by your Surveyor and Conveyancer.

Moving with Motis



www.facebook.com/motisestates

@MotisEstates

www.instagram.com/motisestates

Motis Estates Ltd is a limited company, NI647133 with registered offices of 9 Downshire Place, Newry Co. Down, Northern Ireland, BT34 1DZ, trading as Motis Estates. Motis Estates Ltd is registered with The Royal Institution of Chartered Surveyors, 812728.