



Osbornes
Independent estate agents

Cross Street | North Camp

NEW BUILD AND FINISHED TO AN EXCEPTIONAL STANDARD. This modern 2 bed house is in excellent condition throughout.

New Build | 2 Double Bedrooms | Cloakroom | Ensuite Bathroom | Enclosed Rear Garden | Off-Street Parking

£1,250 per month

NEW BUILD AND FINISHED TO AN EXCEPTIONAL STANDARD. This modern 2 bed house is in excellent condition throughout. Comprising; entrance hall, cloakroom, open plan living room with bi-fold doors to enclosed rear garden. New kitchen with white goods including dishwasher 2 bedrooms, master with en-suite shower room, family bathroom, gas central heating, double glazing, and off street parking. Conveniently located in North Camp Village close to the mainline station, town centre and offers commuter access via the A331 (serving the M3 and A3). Farnborough Main and North Camp railway station are a short distance away giving access to Reading and Gatwick via Guildford and Farnborough main line station, with direct access to Waterloo. Available Immediately. Available Unfurnished





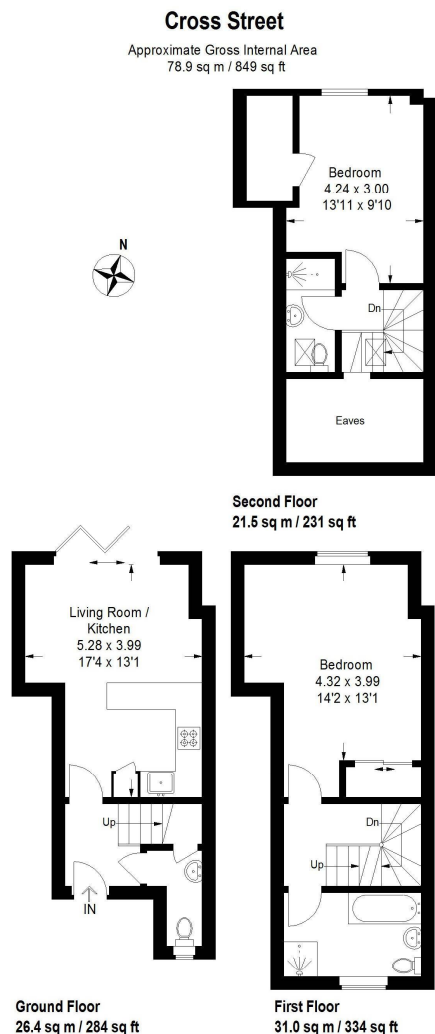


Illustration for identification purposes only, measurements are approximate, not to scale. floorplansUsketch.com © 2020 (ID635448)

Osbornes Estate Agents

38a Camp Road, Farnborough, Hampshire, GU14

01252 370707 | info@osbornesestateagents.co.uk | www.osbornesestateagents.co.uk

Important Notice - These particulars have been prepared in good faith and they are not intended to constitute part of an offer or contract. We have not performed a structural survey on this property and the services, appliances and specific fittings have not been tested. All photographs, measurements, floor plans and distances referred to are given as a guide and should not be relied upon.

