



Osbornes
Independent estate agents

Lynchford Road |
Farnborough | GU14

CONVERTED FORMER VICTORIAN BANK.

Converted Apartment | Hard Flooring Throughout | Available Immediately | Close to Amenities

£1,550 per month

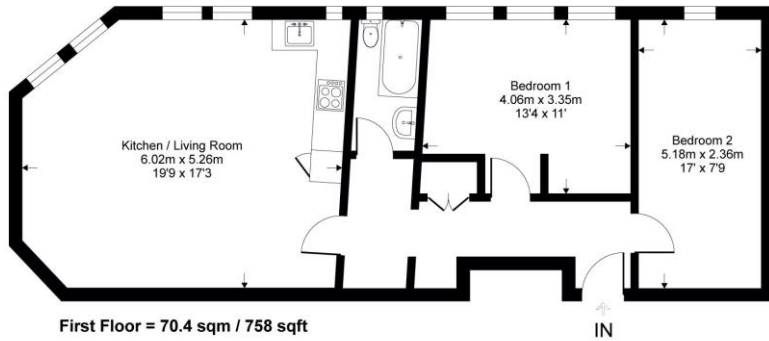
CONVERTED FORMER VICTORIAN BANK. Welcome to this beautifully converted apartment in this former Victorian bank, now transformed into a collection of light, spacious, and modern living spaces. Located on the first floor, this charming apartment retains its original large sash windows and impressive ceiling height, creating an inviting space flooded with natural light and a sense of openness. Situated in the heart of North Camp's Conservation Area, this unique property combines historical charm with contemporary finishes, offering a rare opportunity to reside in a landmark building with all the conveniences of modern living. The apartments feature high ceilings, large windows, and open-plan layouts that emphasize natural light and space. High-quality fittings and thoughtful design make each residence perfect for a comfortable lifestyle. Location & Amenities: Set in North Camp, a vibrant area known for its village feel and charming hi





Flat 2, Alexandra Road

Approximate Gross Internal Area = 70.4 sq m / 758 sq ft



Whilst every attempt has been made to ensure the accuracy of the floor plan contained here, measurements of doors, windows, rooms and any other items are approximate and no responsibility is taken for any error, omission or mis-statement. This plan is for illustrative purposes only and should be used as such by any prospective purchaser.

Osbornes Estate Agents

38a Camp Road, Farnborough, Hampshire, GU14

01252 370707 | info@osbornesestateagents.co.uk | www.osbornesestateagents.co.uk

Important Notice - These particulars have been prepared in good faith and they are not intended to constitute part of an offer or contract. We have not performed a structural survey on this property and the services, appliances and specific fittings have not been tested. All photographs, measurements, floor plans and distances referred to are given as a guide and should not be relied upon.

