

£94,950

Woodside, Redcar, TS10



- One Bedroom
- Gas Central Heating
- Entrance Porch
- Lounge
- Kitchen
- Rear Garden
- No Onward Chain
- Driveway
- EPC Rated: D

We are delighted to welcome to the market this one bedroom semi-detached bungalow offered for sale with no onward chain.

This property would make an ideal retirement property or even investment property for a Landlord looking to expand their portfolio.

This property briefly comprises;

Entrance Porch, Lounge, One Bedroom, Kitchen, Bathroom, Rear Garden, Front Garden & Driveway.

Viewings are strictly via the Agent.

Council Tax Band: A

EPC Rated: D

Tenure: Freehold

Virtual Tour Available:

<https://view.ricoh360.com/b97d4c6c-12d8-4172-9116-9e954e4de58c>

Woodside, Redcar, TS10

Entrance Porch

3'7" x 3'9" (1.09m x 1.14m)

Carpeted. Consumer Unit. uPVC front door.

Lounge

14'9" x 17'2" (4.50m x 5.23m)

Carpeted. Two windows. Two radiators.
Curtains. Heating thermostat controls. TV Ariel.

Hallway

6'5" x 3'0" (1.96m x 0.91m)

Carpeted. Alarm panel. Smoke detector.
Storage cupboard with plumbing for washer,
shelving and electric points.

Kitchen

6'6" x 10'3" (1.98m x 3.12m)

Base and wall mounted units. Stainless steel
sink with mixer and drainer. Extractor fan.
Electra free standing oven. Door to rear garden.
Radiator.

Bedroom 1

8'4" x 10'3" (2.54m x 3.12m)

Carpeted. Radiator. Curtains. TV point. Walk-in
wardrobe. Loft access to combi boiler.

Bathroom

5'6" x 6'3" (1.68m x 1.91m)

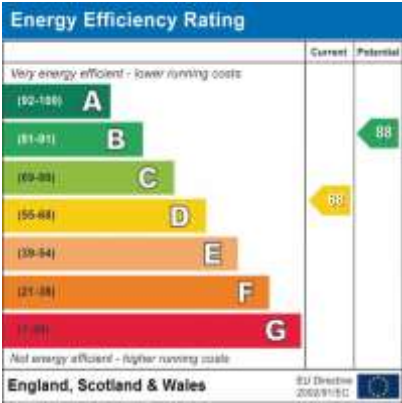
Vinyl flooring. Pedestal sink with mixer tap.
Mirrored cabinet. Fully tiled. Bath with Mira
Spirit shower. Extractor fan. Heated towel rail.
Corner shelf unit. Toilet.

Front Garden

Driveway. Gravelled area. Low maintenance.

Rear Garden

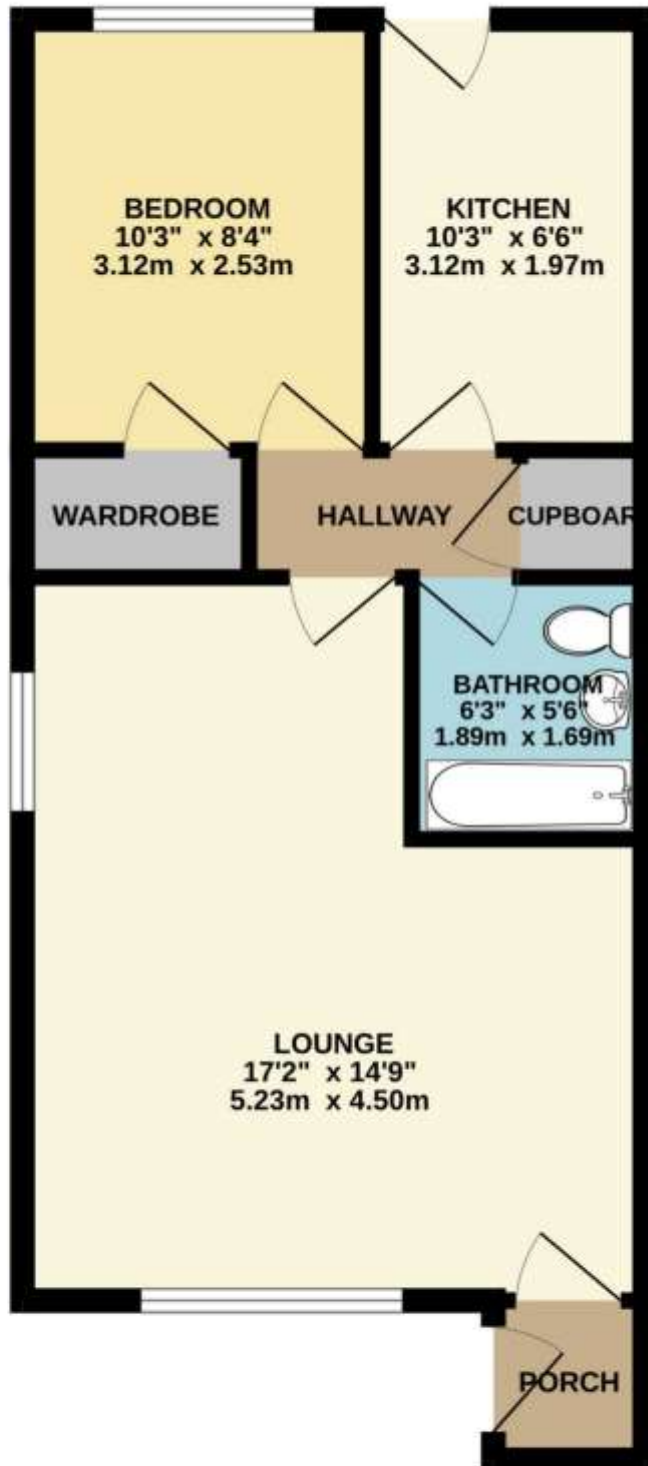
Fully enclosed rear garden with shed. Low
maintenance.







GROUND FLOOR
463 sq.ft. (43.0 sq.m.) approx.

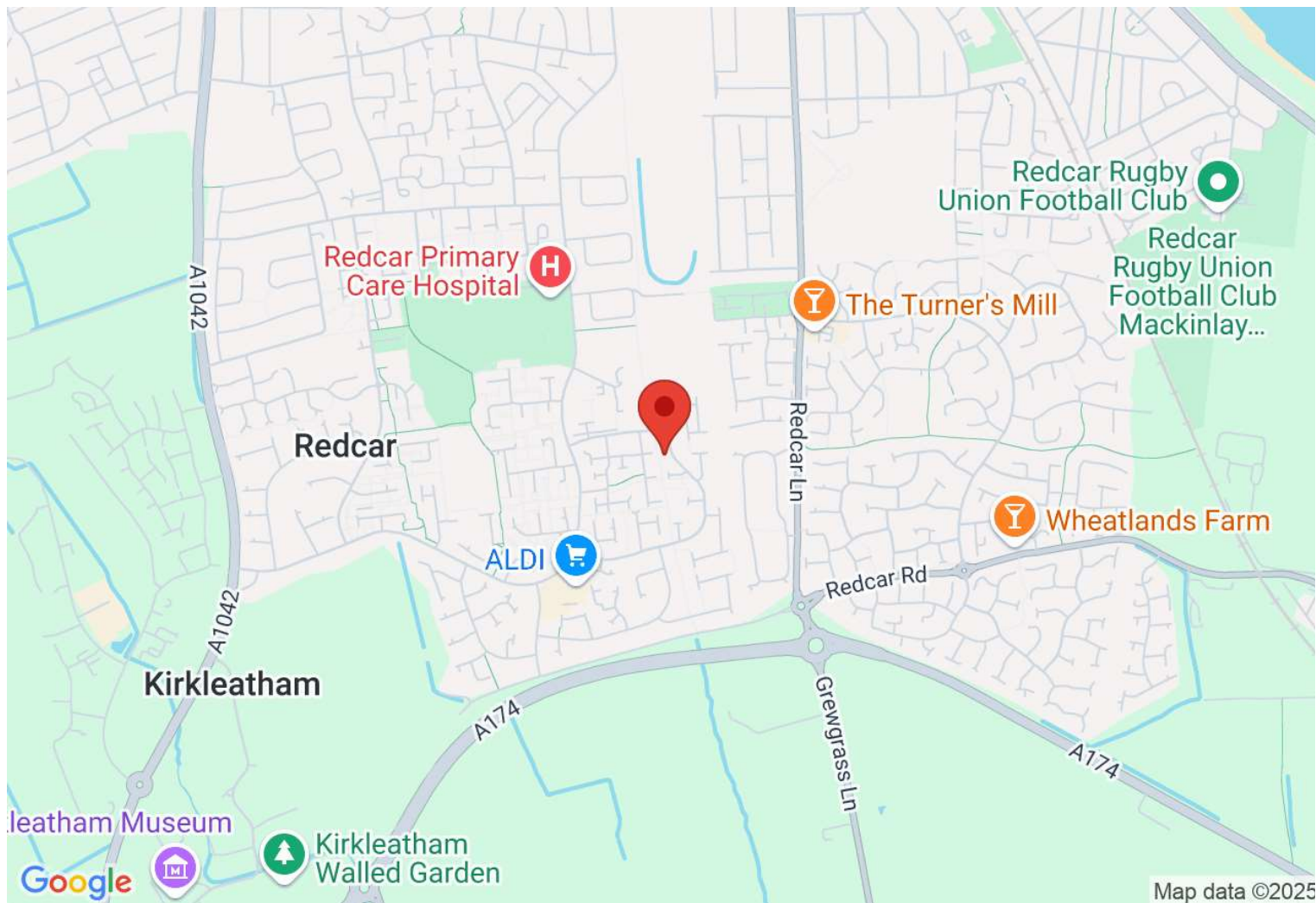


TOTAL FLOOR AREA : 463 sq.ft. (43.0 sq.m.) approx.

Whilst every attempt has been made to ensure the accuracy of the floorplan contained here, measurements of doors, windows, rooms and any other items are approximate and no responsibility is taken for any error, omission or mis-statement. This plan is for illustrative purposes only and should be used as such by any prospective purchaser. The services, systems and appliances shown have not been tested and no guarantee as to their operability or efficiency can be given.
Made with Metropix ©2025

Directions

Location



VIEWING BY APPOINTMENT WITH AGENTS REDCAR LETTINGS & SALES COMPANY LTD

Exchange Buildings, 17-19 Cleveland Street, Redcar, TS10 1AR T: 01642 483430 E: info@redcarletting.co.uk W: redcarlettingandsales.co.uk

General: While we endeavour to make our sales particulars fair, accurate and reliable, they are only a general guide to the property and, accordingly, if there is any point which is of particular importance to you, please contact the office and we will be pleased to check the position for you, especially if you are contemplating travelling some distance to view the property.

Measurements: These approximate room sizes are only intended as general guidance. You must verify the dimensions carefully before ordering carpets or any built-in furniture.

Services: Please note we have not tested the services or any of the equipment or appliances in this property, accordingly we strongly advise prospective buyers to commission their own survey or service reports before finalizing their offer to purchase.

THESE PARTICULARS ARE ISSUED IN GOOD FAITH BUT DO NOT CONSTITUTE REPRESENTATIONS OF FACT OR FORM PART OF ANY OFFER OR CONTRACT. THE MATTERS REFERRED TO IN THESE PARTICULARS SHOULD BE INDEPENDENTLY VERIFIED BY PROSPECTIVE BUYERS OR TENANTS. NEITHER REDCAR LETTINGS & SALES COMPANY LTD NOR ANY OF ITS EMPLOYEES OR AGENTS HAS ANY AUTHORITY TO MAKE OR GIVE ANY REPRESENTATION OR WARRANTY WHATEVER IN RELATION TO THIS PROPERTY.

YOUR HOME IS AT RISK IF YOU DO NOT KEEP UP REPAYMENTS ON A MORTGAGE OR OTHER LOAN SECURED ON IT.

Written quotations available on request. All loans secured on property. Life assurance is usually required.