



SEYMOURGREEN
AT THE HEART ♥ OF YOUR MOVE

Kimber Road, Southfields, London, SW18

- ♥ Excellent Condition
- ♥ Spacious Living Room
- ♥ Stylish Throughout
- ♥ Furnished
- ♥ Open Plan Kitchen
- ♥ Opposite King Georges Park

A very SMART top floor flat in EXCELLENT CONDITION set within this well located development within walking distance to SOUTHFIELDS and EARLSFIELD for great transport links, shops bars and restaurants. With a spacious open plan living room, good size double bedroom and stylish bathroom this wonderful apartment would suit a professional single or couple.

To Let: £1,500 per month



Seymour Green, 483 Merton Road, London SW18 5LE

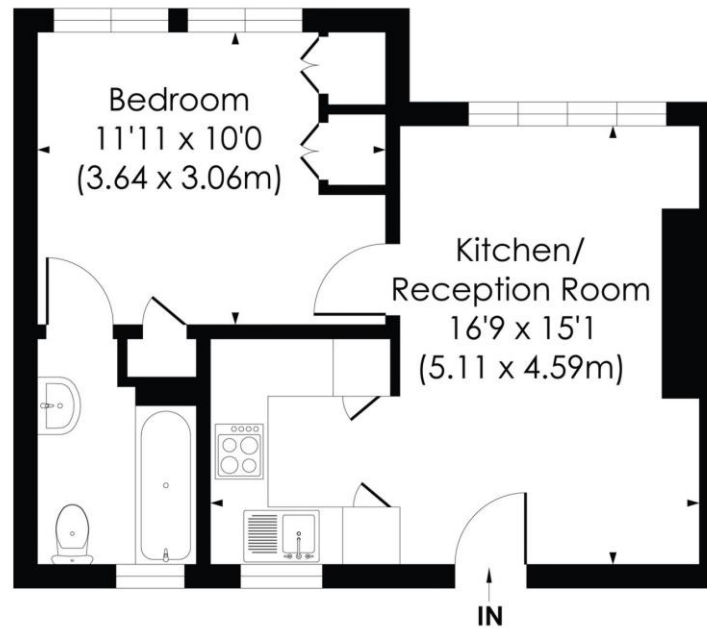
T: 020 8870 0111 F: 020 3302 9598 E: southfields@seymour-green.co.uk W: seymour-green.co.uk



SEYMOURGREEN
AT THE HEART ♥ OF YOUR MOVE

COLEMAN COURT, SW18

Approx. Gross Internal Floor Area
375 Sq. ft/34.81 Sq. m



THIRD FLOOR

© Pixangle Property Marketing Ltd. Info@pixangle.com Tel: 0208 870 2118

pixangle
PROPERTY MARKETING

This floor plan has been prepared for the purpose of illustration only in accordance with the latest RICS code of measuring practice and is not to scale. All measurements and areas are approximate and whilst every effort has been made to ensure the accuracy of the plan contained here, no responsibility is taken for any error, omission or misstatement.



SEYMOURGREEN
AT THE HEART ♥ OF YOUR MOVE

Kimber Road, Southfields, London, SW18

To Let: £1,500 per month



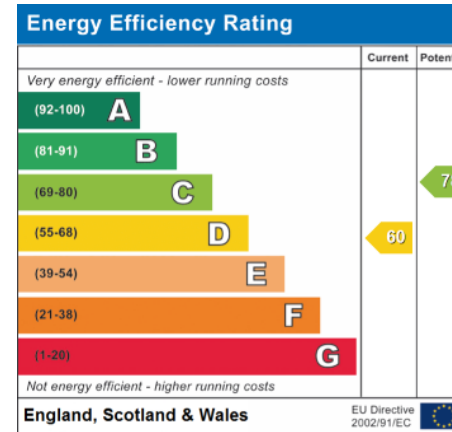
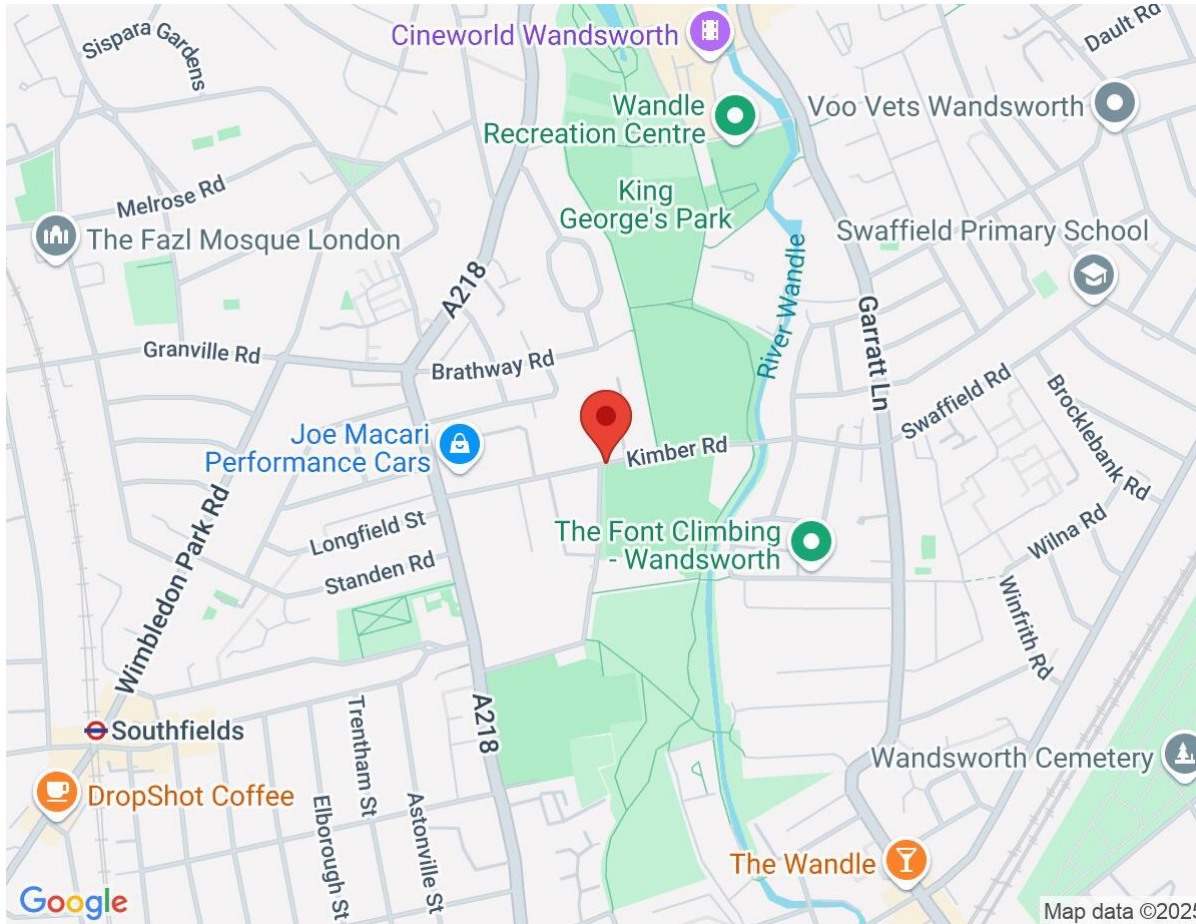
Seymour Green, 483 Merton Road, London SW18 5LE
T: 020 8870 0111 F: 020 3302 9598 E: southfields@seymour-green.co.uk W: seymour-green.co.uk



SEYMOURGREEN
AT THE HEART ♥ OF YOUR MOVE

Kimber Road, Southfields, London, SW18

To Let: £1,500 per month



IMPORTANT NOTICE
Descriptions of the property are subjective and are used in good faith as an opinion and NOT as a statement of fact. Please make further specific enquires to ensure that our descriptions are likely to match any expectations you may have of the property. We have not tested any services, systems or appliances at this property. We strongly recommend that all the information we provide be verified by you on inspection, and by your Surveyor and Conveyancer.

Seymour Green, 483 Merton Road, London SW18 5LE
T: 020 8870 0111 F: 020 3302 9598 E: southfields@seymour-green.co.uk W: seymour-green.co.uk