



SEYMOURGREEN
AT THE HEART ♥ OF YOUR MOVE

Bodmin Street, Earlsfield, London, SW18

- ♥ Stunning Ground Floor Flat
- ♥ Private Rear Garden
- ♥ Two Double Bedrooms
- ♥ Great for Transport
- ♥ Excellent Location
- ♥ Open Plan Living

WOW! Absolutely STUNNING ground floor flat perfectly located with EARLSFIELD MAINLINE STATION just 7 minutes walk, along with the fabulous amenities of GARRATT LANE, whilst the wide open spaces of KING GEORGES PARK are just 100m away. This immaculate ultra-modern property has an open plan kitchen living space with bi fold doors to the low maintenance rear garden, two double bedrooms and wonderful bathroom.

To Let: £2,500 per month



Seymour Green, 483 Merton Road, London SW18 5LE

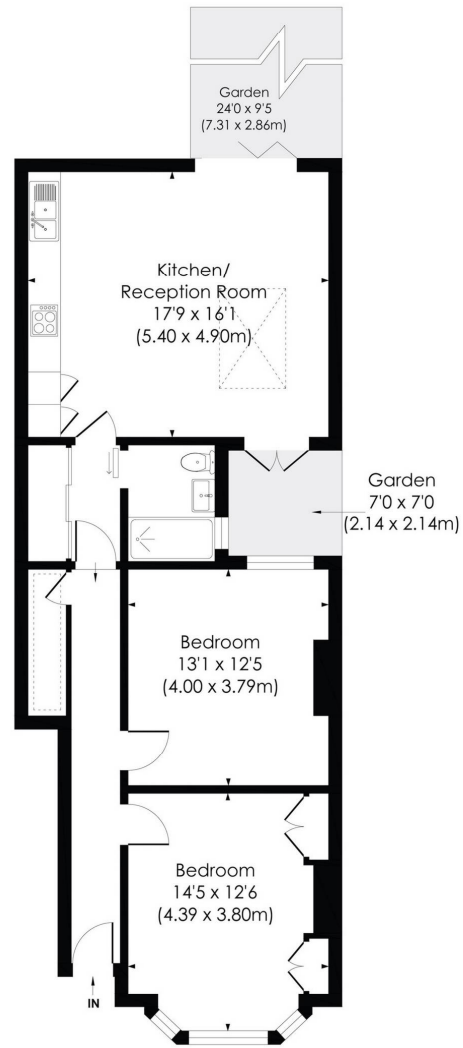
T: 020 8870 0111 F: 020 3302 9598 E: southfields@seymour-green.co.uk W: seymour-green.co.uk



SEYMOURGREEN
AT THE HEART ♥ OF YOUR MOVE

BODMIN STREET, SW18

Approx. Gross Internal Floor Area
800 Sq. ft/74.33 Sq. m



GROUND FLOOR

© Pixangle Property Marketing Ltd. info@pixangle.com Tel: 0208 870 2118

pixangle
PROPERTY MARKETING

This floor plan has been prepared for the purpose of illustration only in accordance with the latest RICS code of measuring practice and is not to scale. All measurements and areas are approximate and whilst every effort has been made to ensure the accuracy of the plan contained here, no responsibility is taken for any error, omission or misstatement.



SEYMOURGREEN
AT THE HEART ♥ OF YOUR MOVE

Bodmin Street, Earlsfield, London, SW18

To Let: £2,500 per month

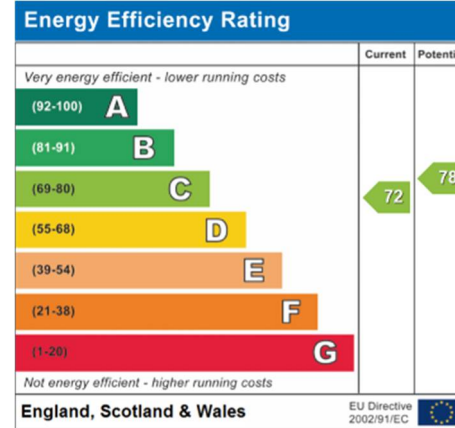
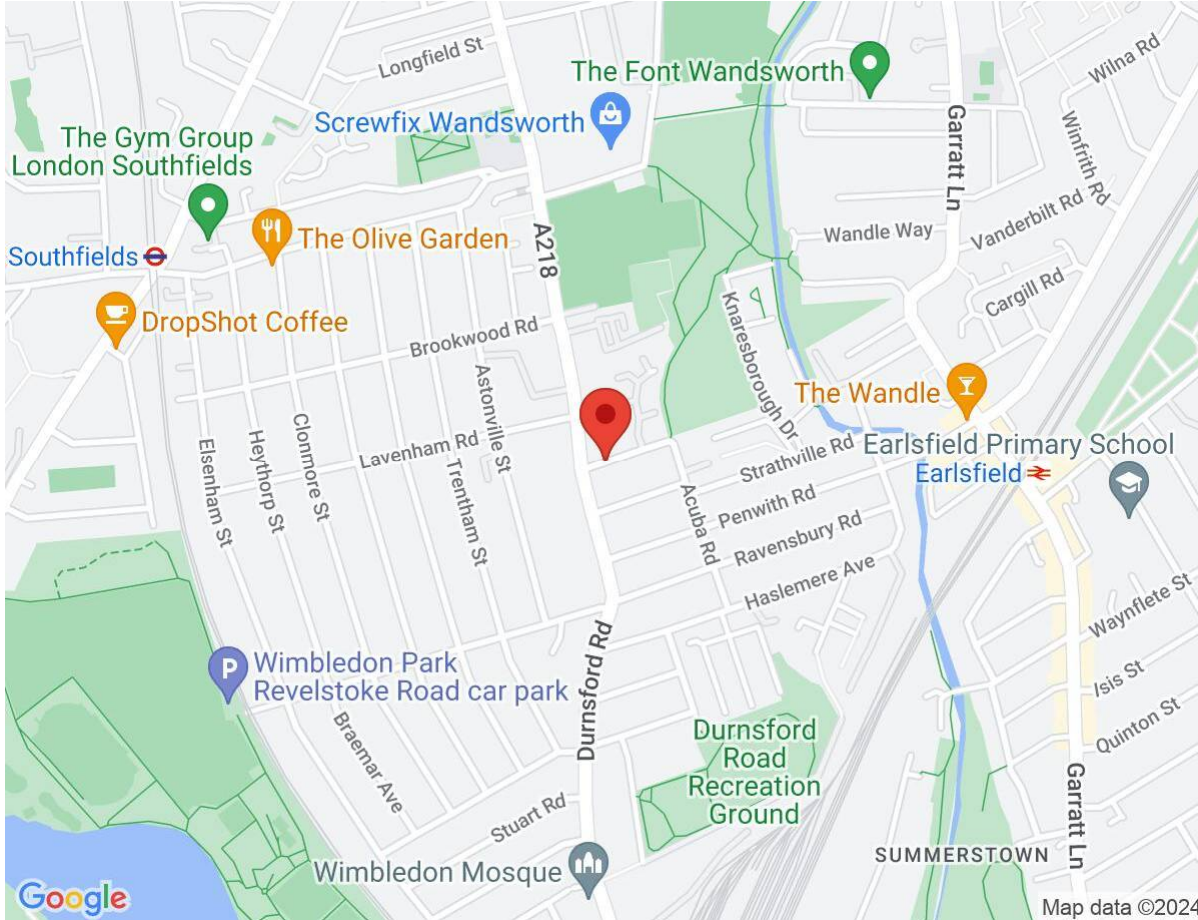


Seymour Green, 483 Merton Road, London SW18 5LE
T: 020 8870 0111 F: 020 3302 9598 E: southfields@seymour-green.co.uk W: seymour-green.co.uk



SEYMOURGREEN
AT THE HEART OF YOUR MOVE

Bodmin Street, Earlsfield, London, SW18 To Let: £2,500 per month



IMPORTANT NOTICE
Descriptions of the property are subjective and are used in good faith as an opinion and NOT as a statement of fact. Please make further specific enquires to ensure that our descriptions are likely to match any expectations you may have of the property. We have not tested any services, systems or appliances at this property. We strongly recommend that all the information we provide be verified by you on inspection, and by your Surveyor and Conveyancer.

Seymour Green, 483 Merton Road, London SW18 5LE
T: 020 8870 0111 F: 020 3302 9598 E: southfields@seymour-green.co.uk W: seymour-green.co.uk