



**SEYMOURGREEN**  
AT THE HEART ♥ OF YOUR MOVE

## Revelstoke Road, Southfields, London, SW18

- ♥ Available Immediately
- ♥ Large Roof Terrace
- ♥ Two Double Bedrooms
- ♥ Private Entrance
- ♥ Unfurnished
- ♥ Great for Transport

A Spacious TWO DOUBLE bedroom flat ideally located on the popular Southfields Grid being within walking distance to both SOUTHFIELDS and WIMBLEDON PARK TUBE stations, along with the wide open spaces of Wimbledon Park itself. With generous open plan living room kitchen that leads out onto the decked private roof terrace, two double bedrooms, tidy bathroom and private entrance this unfurnished property will make the ideal home.

# To Let: £2,500 per month



Seymour Green, 483 Merton Road, London SW18 5LE

T: 020 8870 0111 F: 020 3302 9598 E: [southfields@seymour-green.co.uk](mailto:southfields@seymour-green.co.uk) W: [seymour-green.co.uk](http://seymour-green.co.uk)

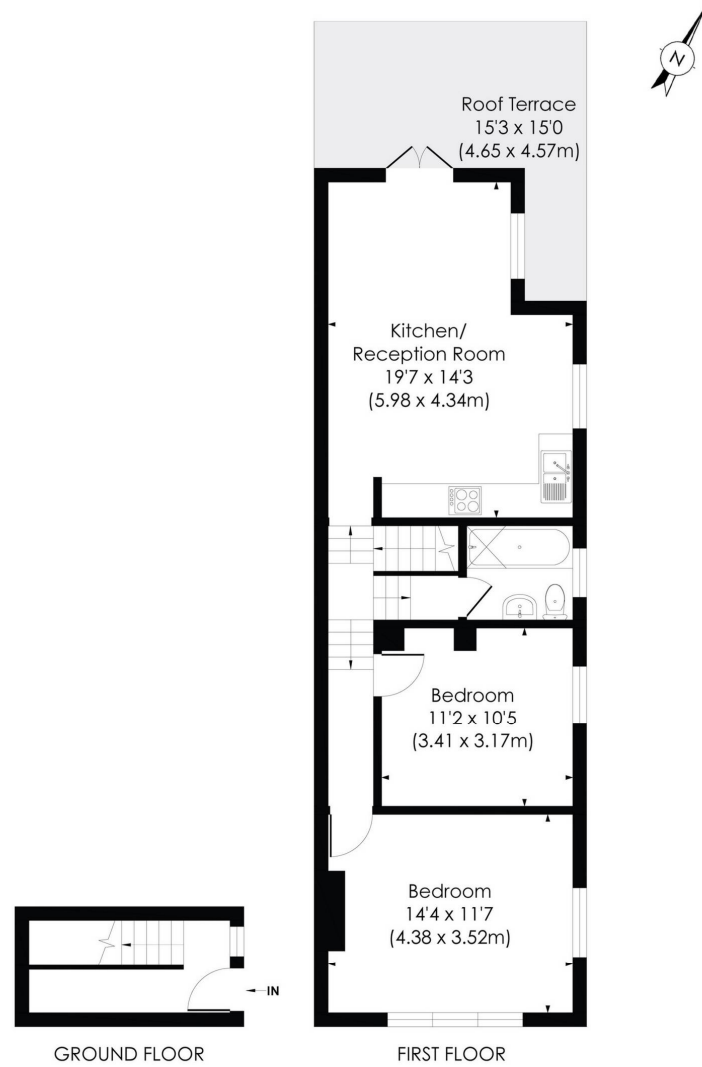


**SEYMOURGREEN**  
AT THE HEART ♥ OF YOUR MOVE

## REVELSTOKE ROAD, SW18

Approx. Gross Internal Floor Area

**725 Sq. ft/67.37 Sq. m**



© Pixangle Property Marketing Ltd. info@pixangle.com Tel: 0208 870 2118

**pixangle**  
PROPERTY MARKETING

This floor plan has been prepared for the purpose of illustration only in accordance with the latest RICS code of measuring practice and is not to scale. All measurements and areas are approximate and whilst every effort has been made to ensure the accuracy of the plan contained here, no responsibility is taken for any error, omission or misstatement.



**SEYMOURGREEN**  
AT THE HEART ♥ OF YOUR MOVE

# Revelstoke Road, Southfields, London, SW18

## To Let: £2,500 per month



Seymour Green, 483 Merton Road, London SW18 5LE

T: 020 8870 0111 F: 020 3302 9598 E: [southfields@seymour-green.co.uk](mailto:southfields@seymour-green.co.uk) W: [seymour-green.co.uk](http://seymour-green.co.uk)

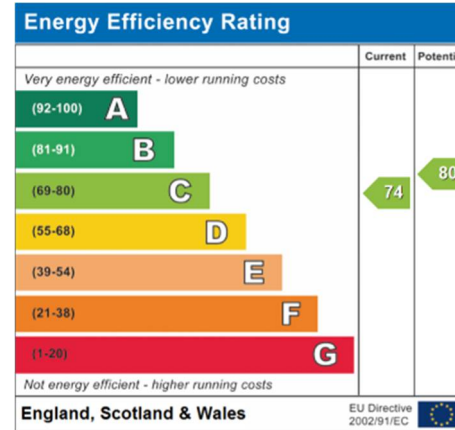
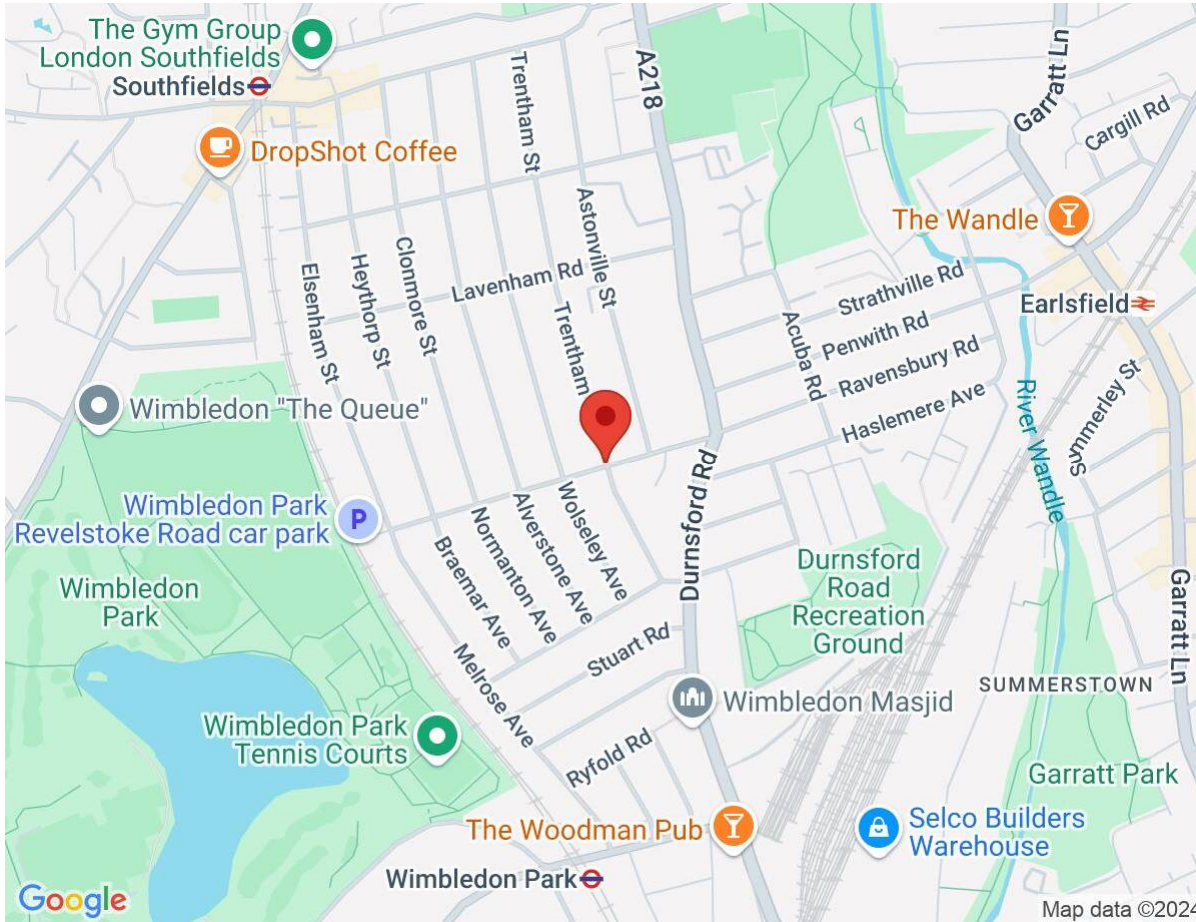




**SEYMOURGREEN**  
AT THE HEART ♥ OF YOUR MOVE

# Revelstoke Road, Southfields, London, SW18

## To Let: £2,500 per month



**IMPORTANT NOTICE**  
Descriptions of the property are subjective and are used in good faith as an opinion and NOT as a statement of fact. Please make further specific enquires to ensure that our descriptions are likely to match any expectations you may have of the property. We have not tested any services, systems or appliances at this property. We strongly recommend that all the information we provide be verified by you on inspection, and by your Surveyor and Conveyancer.

Seymour Green, 483 Merton Road, London SW18 5LE  
T: 020 8870 0111 F: 020 3302 9598 E: southfields@seymour-green.co.uk W: seymour-green.co.uk