



SEYMOURGREEN
AT THE HEART ♥ OF YOUR MOVE

Woodside, Wimbledon, London, SW19

- ♥ Stunning Rear Garden
- ♥ Wonderful Kitchen/
Dining Room
- ♥ Ideal Location
- ♥ Off Street Parking
- ♥ Large Reception Room
- ♥ Spacious Double plus
Single Bedrooms

A delightful character maisonette ideally located for all the amenities of Wimbledon Village, the Town Centre and transport to London. This superbly presented garden flat comprises a large reception room with feature fireplace and built in storage, a wonderful kitchen/dining room with French doors leading to the gorgeous rear garden, a generous double bedroom with plentiful built in wardrobes, a further single bedroom/study also with desk and storage and a shower room with washer/dryer, vanity and cupboards. The property also benefits from useful side access and valuable off street parking for one car.

For Sale: £645,000

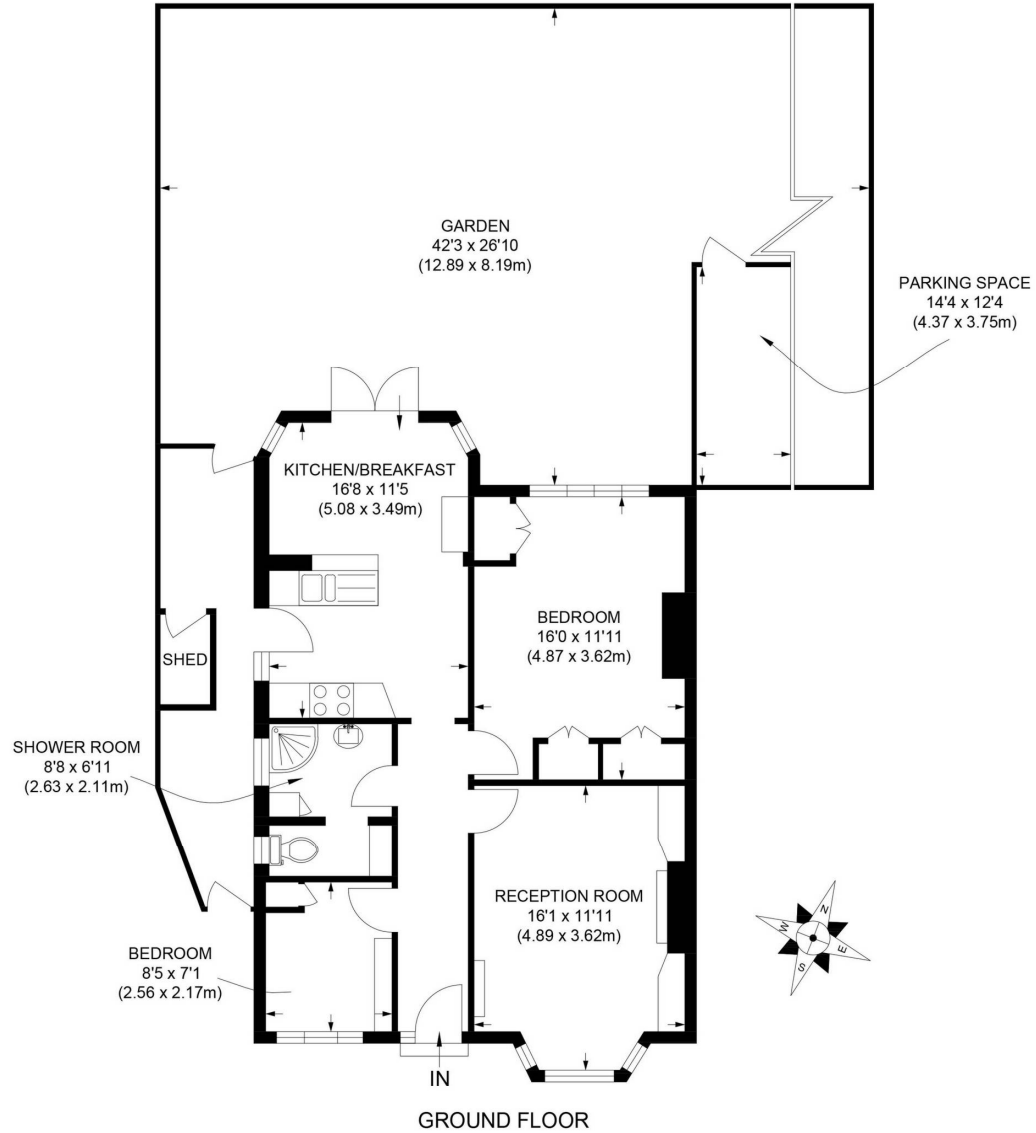


Seymour Green, 483 Merton Road, London SW18 5LE

T: 020 8870 0111 F: 020 3302 9598 E: southfields@seymour-green.co.uk W: seymour-green.co.uk



SEYMOURGREEN
AT THE HEART ♥ OF YOUR MOVE



APPROX. GROSS INTERNAL FLOOR AREA 765 SQ FT / 71.1 SQ M

Illustration for identification purpose only, not to scale

All measurements are maximum, and includes wardrobes and window bays where applicable

Prepared by Pixangle ©. Tel 020 8870 2118



SEYMOURGREEN
AT THE HEART ♥ OF YOUR MOVE

Woodside, Wimbledon, London, SW19

For Sale: £645,000



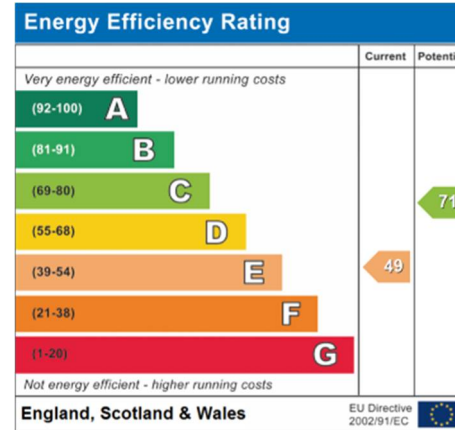
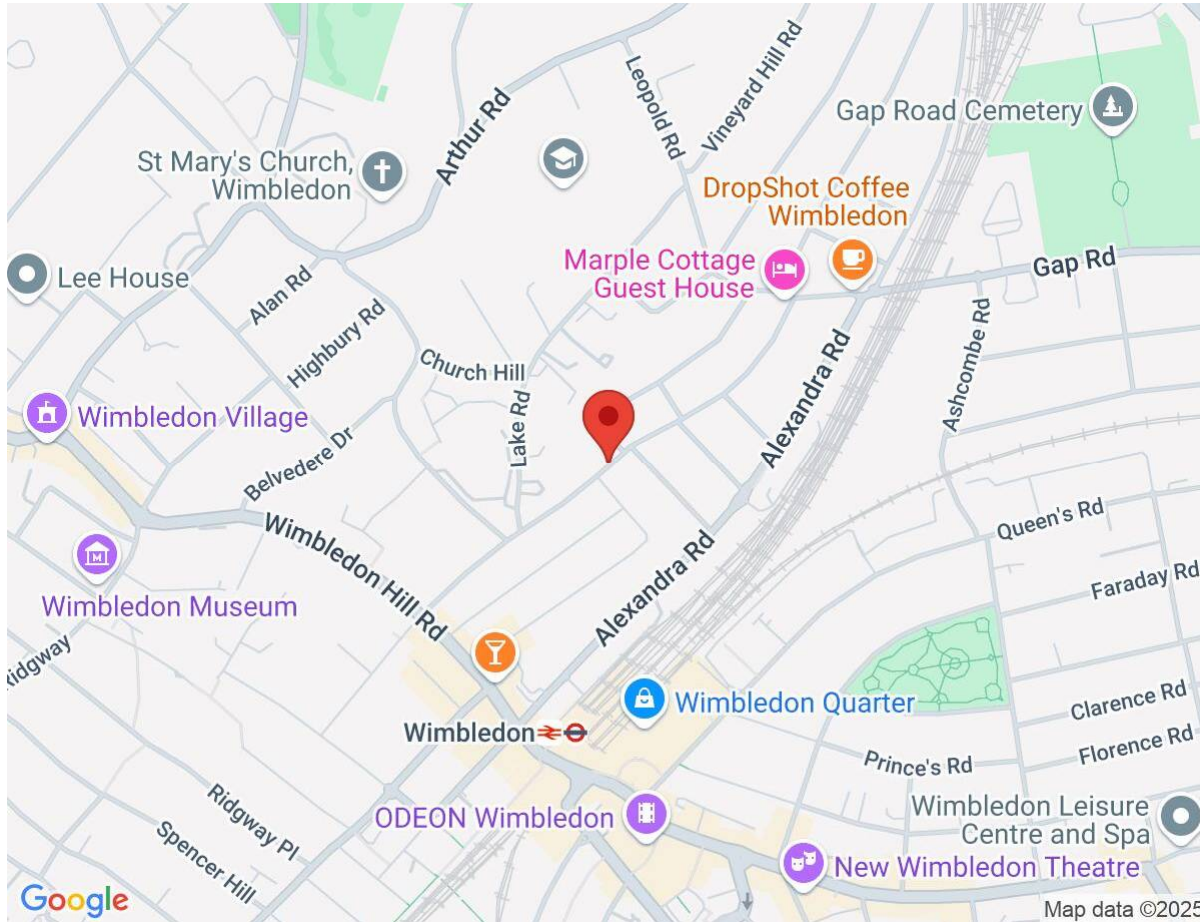
Seymour Green, 483 Merton Road, London SW18 5LE
T: 020 8870 0111 F: 020 3302 9598 E: southfields@seymour-green.co.uk W: seymour-green.co.uk



SEYMOURGREEN
AT THE HEART ♥ OF YOUR MOVE

Woodside, Wimbledon, London, SW19

For Sale: £645,000



IMPORTANT NOTICE
Descriptions of the property are subjective and are used in good faith as an opinion and NOT as a statement of fact. Please make further specific enquires to ensure that our descriptions are likely to match any expectations you may have of the property. We have not tested any services, systems or appliances at this property. We strongly recommend that all the information we provide be verified by you on inspection, and by your Surveyor and Conveyancer.

Seymour Green, 483 Merton Road, London SW18 5LE
T: 020 8870 0111 F: 020 3302 9598 E: southfields@seymour-green.co.uk W: seymour-green.co.uk