



£649,950 SHARE OF FREEHOLD

EATON COURT, EATON RISE, EALING, W5 2EU





**A VERY SPACIOUS THREE-BEDROOM ART DECO APARTMENT WITH LIGHT AND CHARACTER.**

Eaton Court is a popular well located 1930's development set in a good size communal garden. Conveniently situated for the Ealing Broadway Town Centre with its busy shops, restaurants, Cineworld and Crossrail and underground station.

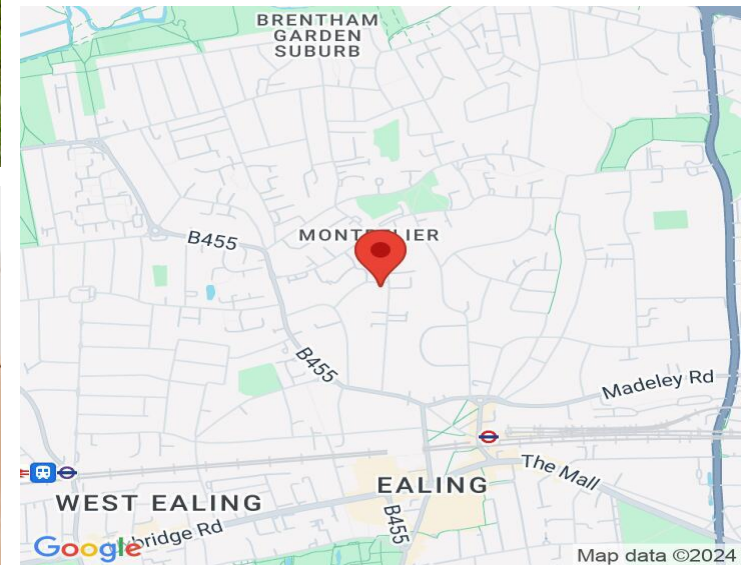
This roomy three-bedroom apartment offers a very good size 22' living room. Fitted kitchen and modern bathroom. Separate WC. Wood floors. Neutral décor. Double glazing. Gas central heating. Large well-kept communal gardens and no forward chain.

**Lease:** 980 Years plus

**Service Charge:** £3,160.00 p.a.

**COUNCIL TAX BAND:** E

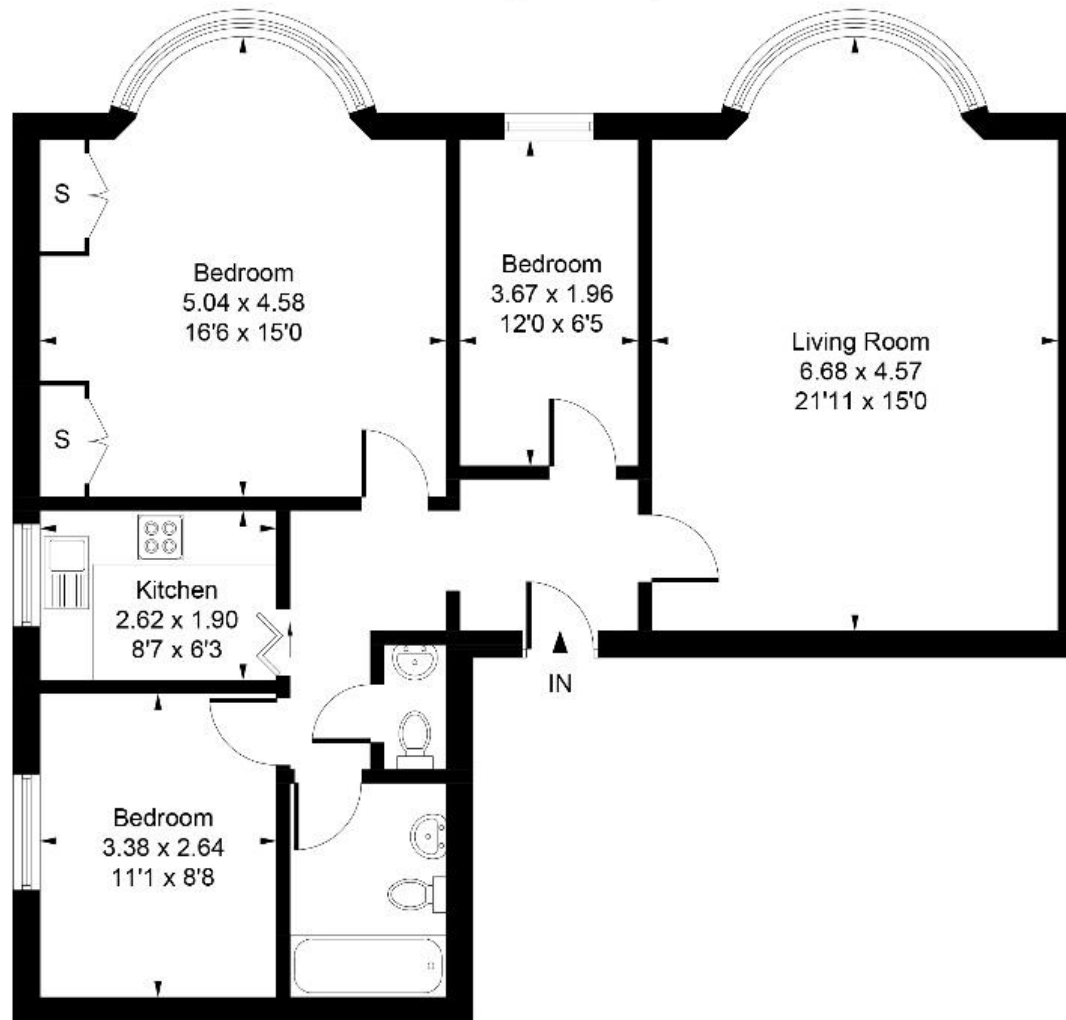
**EPC Rating:** C



[www.sintonandrews.com](http://www.sintonandrews.com)  
020 8566 1990

# Eaton Court, Eaton Rise, W5 2EU

Approximate Gross Internal Area  
86.02 sq m / 926 sq ft



Whilst every attempt has been made to ensure the accuracy of the floor plan contained here, measurements of doors, windows, rooms and any other items are approximate and no responsibility is taken for any error, omission, or mis-statement. This plan is for illustrative purposes only and should be used as such by any prospective purchase.

Produced by [jcphotographystudio.com](http://jcphotographystudio.com)

020 8566 1990

8 Spring Bridge Road, Ealing, London W5 2AA

[SINTONANDREWS.COM](http://SINTONANDREWS.COM)

