



£235,000 Leasehold

FLAT 20 BAMPTON COURT, BLAKESLEY AVENUE, EALING, W5 2DQ





A LIGHT & AIRY FIRST FLOOR APARTMENT IN THIS SOUGHT AFTER, RETIREMENT BLOCK.

Excellently placed in this quiet, tree-lined residential avenue in the lee of Ealing Abbey and within easy reach of Haven Green with Ealing Broadway Station and Town Centre beyond.

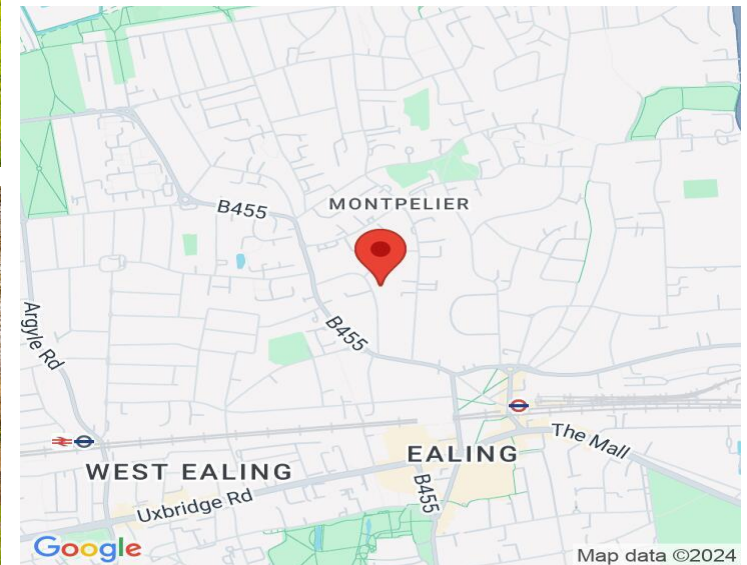
This delightful one bedroom first floor apartment is in good decorative order throughout - including a modern kitchen & bathroom. It has numerous benefits including Entryphone Protection, Automatic Lift - and enjoys use of Glorious Landscaped Communal Gardens and warmed by an efficient heating system.

Lease: 165 Years from 25th July 2011

Service Charge: £2,577.71 p.a.

COUNCIL TAX BAND: C

EPC Rating: B

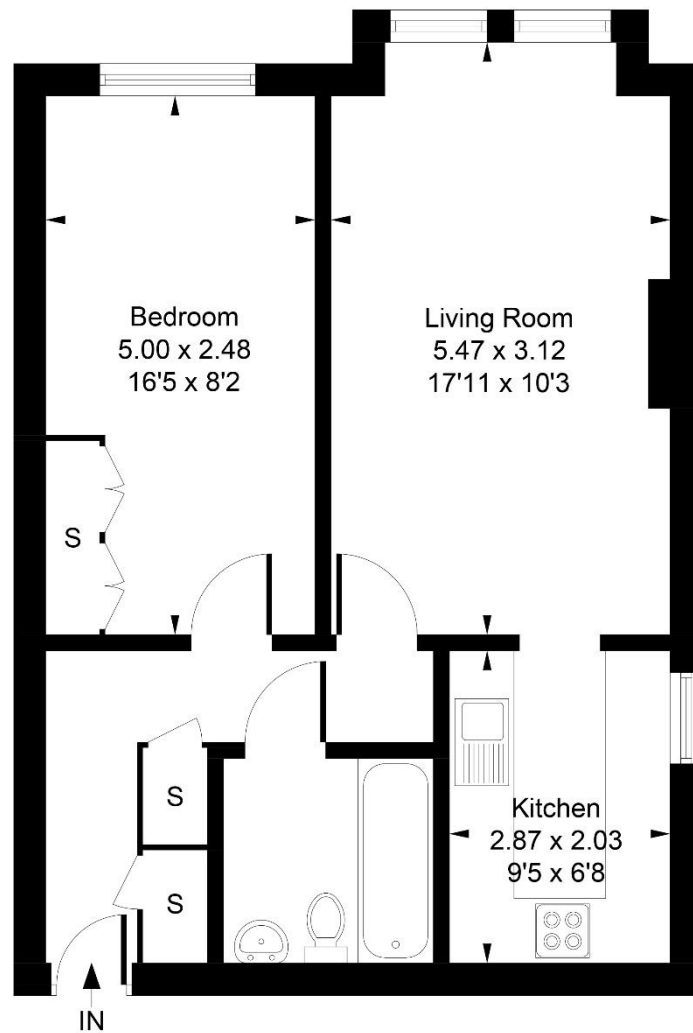


www.sintonandrews.com
020 8566 1990



Bampton Court, Blakesley Avenue, London, W5 2DQ

Approximate Gross Internal Area
47.91 sq m / 516 sq ft



Whilst every attempt has been made to ensure the accuracy of the floor plan contained here, measurements of doors, windows, rooms and any other items are approximate and no responsibility is taken for any error, omission, or mis-statement.
This plan is for illustrative purposes only and should be used as such by any prospective purchaser.

Produced by jcphotographystudio.com



020 8566 1990

8 Spring Bridge Road, Ealing, London W5 2AA

SINTONANDREWS.COM

